

# RBM39 antibody



Catalog Number: 114611

## Product name

RBM39 antibody

## Immunogen

[Human RBM39 Recombinant protein \(GST tag\)](#)

## Specificity

Human, Mouse, Rat; other species not tested.

## Antibody description

RBM39 Rabbit Polyclonal antibody. Positive IHC detected in human pancreas tissue. Positive WB detected in HEK-293T cells, human skeletal muscle tissue, mouse kidney tissue. Observed molecular weight by Western-blot: 60-70kd

## Preparation

This antibody was obtained by immunization of RBM39 recombinant protein (Accession Number: NM\_184234). Purification method: Antigen affinity purified.

## Formulation

PBS with 0.02% sodium azide and 50% glycerol pH 7.3.

## Storage

Store at -20°C. DO NOT ALIQUOT

## Clonality

Polyclonal

## Ig Type

Rabbit IgG

## Applications

ELISA, IHC, WB

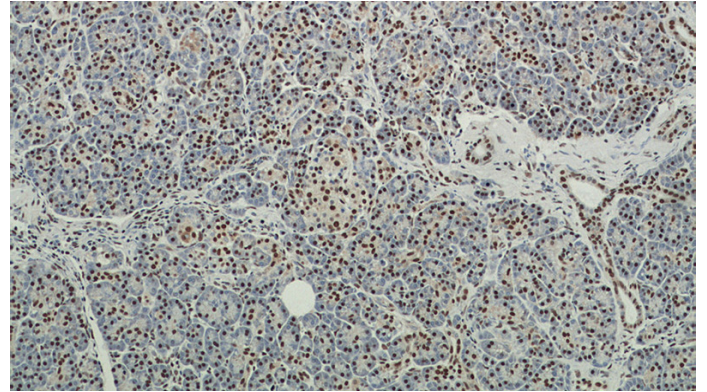
## Dilutions

Recommended Dilution:

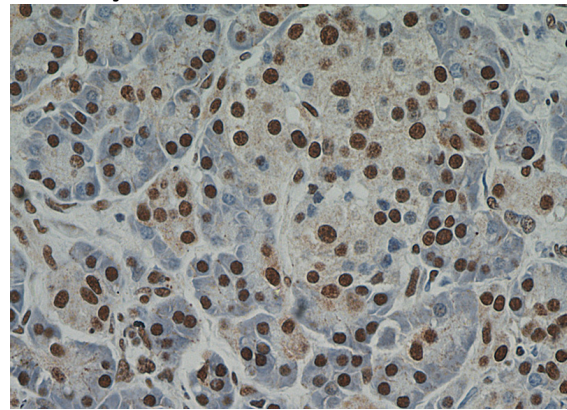
WB: 1:500-1:5000

IHC: 1:20-1:200

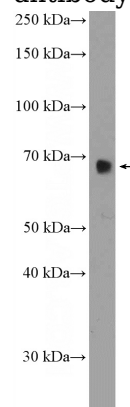
## Validations



Immunohistochemical of paraffin-embedded human pancreas using Catalog No:114611(RBM39 antibody) at dilution of 1:50 (under 10x lens)



Immunohistochemical of paraffin-embedded human pancreas using Catalog No:114611(RBM39 antibody) at dilution of 1:50 (under 40x lens)



# RBM39 antibody



Catalog Number: 114611

---

HEK-293T cells were subjected to SDS PAGE

followed by western blot with Catalog  
No:114611(RBM39 Antibody) at dilution of 1:1000