

RBM22 antibody



Catalog Number: 114605

Product name

RBM22 antibody

Specificity

Human, Mouse, Rat; other species not tested.

Antibody description

RBM22 Rabbit Polyclonal antibody. Positive WB detected in Raji cells, NIH/3T3 cells. Observed molecular weight by Western-blot: 47-50 kDa

Preparation

This antibody was obtained by immunization of RBM22 recombinant protein (Accession Number: NM_018047). Purification method: Antigen affinity purified.

Formulation

PBS with 0.02% sodium azide and 50% glycerol pH 7.3.

Storage

Store at -20°C. DO NOT ALIQUOT

Clonality

Polyclonal

Ig Type

Rabbit IgG

Applications

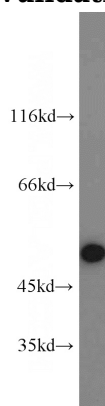
ELISA, WB

Dilutions

Recommended Dilution:

WB: 1:500-1:5000

Validations



Raji cells were subjected to SDS PAGE followed by western blot with Catalog No:114605(RBM22 antibody) at dilution of 1:1000