

# RbAp46 antibody

Catalog Number: 114588

## Product name

RbAp46 antibody

IP: 1:200-1:1000

IHC: 1:20-1:200

## Specificity

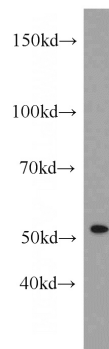
Human, Mouse, Rat; other species not tested.

IF: 1:50-1:500

## Antibody description

RbAp46 Rabbit Polyclonal antibody. Positive IF detected in A431 cells. Positive IHC detected in human cervical cancer tissue, human breast cancer tissue. Positive IP detected in A431 cells. Positive WB detected in A431 cells. Observed molecular weight by Western-blot: 52 kDa

## Validations



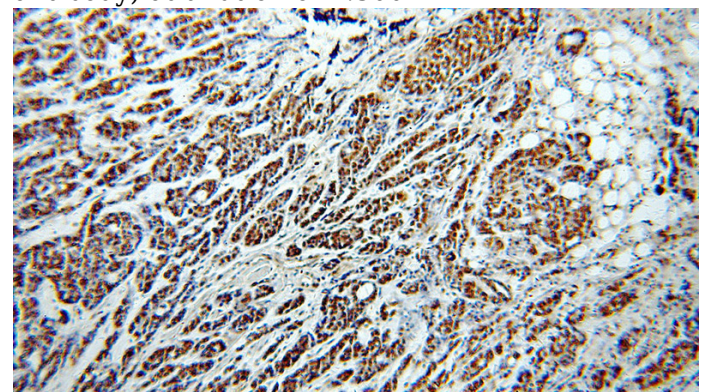
## Preparation

This antibody was obtained by immunization of Peptide (Accession Number: NM\_002893). Purification method: Antigen affinity purified.

A431 cells were subjected to SDS PAGE followed by western blot with Catalog No:114588(RBBP7 antibody) at dilution of 1:300

## Formulation

PBS with 0.02% sodium azide and 50% glycerol pH 7.3.



## Storage

Store at -20°C. DO NOT ALIQUOT

## Clonality

Polyclonal

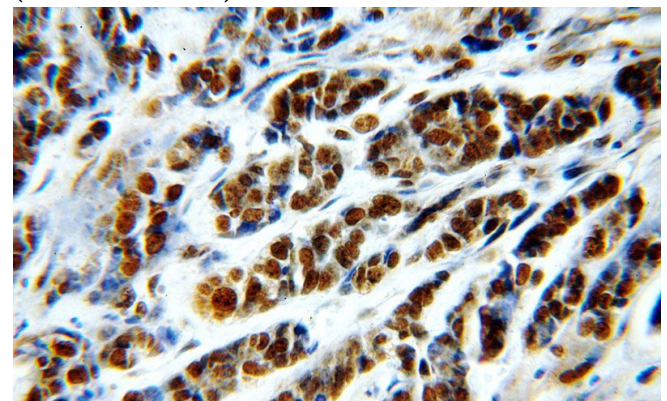
## Ig Type

Rabbit IgG

## Applications

ELISA, WB, IHC, IP, IF

Immunohistochemical of paraffin-embedded human cervical cancer using Catalog No:114588(RBBP7 antibody) at dilution of 1:50 (under 10x lens)



## Dilutions

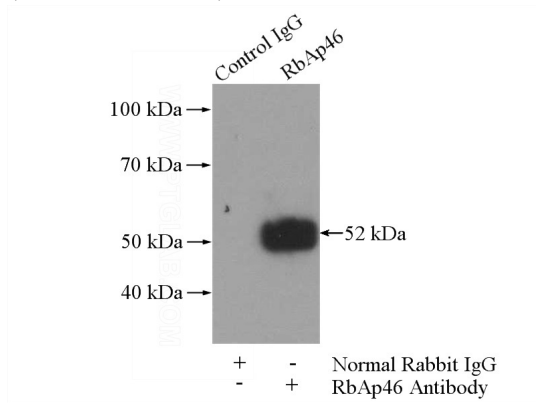
Recommended Dilution:

WB: 1:200-1:1000

# RbAp46 antibody

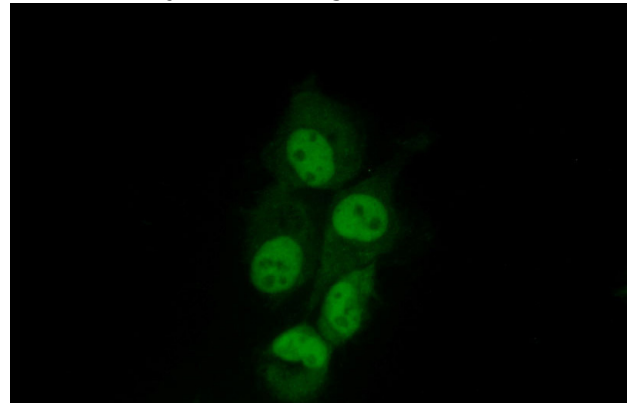
Catalog Number: 114588

Immunohistochemical of paraffin-embedded human cervical cancer using Catalog No:114588(RBBP7 antibody) at dilution of 1:50 (under 40x lens)



IP Result of anti-RBBP7 (IP:Catalog No:114588, 4ug; Detection:Catalog No:114588 1:300) with

A431 cells lysate 2400ug.



Immunofluorescent analysis of (10% Formaldehyde) fixed A431 cells using Catalog No:114588(RBBP7 Antibody) at dilution of 1:50 and Alexa Fluor 488-conjugated AffiniPure Goat Anti-Rabbit IgG(H+L)