

RCN2 antibody



Catalog Number: 114579

Product name

RCN2 antibody

WB: 1:200-1:2000

IP: 1:200-1:1000

Specificity

Human, Mouse, Rat; other species not tested.

IHC: 1:20-1:200

IF: 1:20-1:200

Antibody description

RCN2 Rabbit Polyclonal antibody. Positive IHC detected in human gliomas tissue, human testis tissue. Positive IF detected in HepG2 cells. Positive WB detected in human brain tissue, HEK-293 cells, mouse lung tissue. Positive IP detected in mouse lung tissue. Observed molecular weight by Western-blot: 55 kDa

Preparation

This antibody was obtained by immunization of RCN2 recombinant protein (Accession Number: NM_002902). Purification method: Antigen affinity purified.

Formulation

PBS with 0.1% sodium azide and 50% glycerol pH 7.3.

Storage

Store at -20°C. DO NOT ALIQUOT

Clonality

Polyclonal

Ig Type

Rabbit IgG

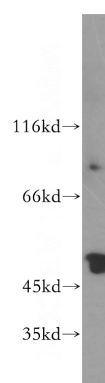
Applications

ELISA, WB, IHC, IF, IP

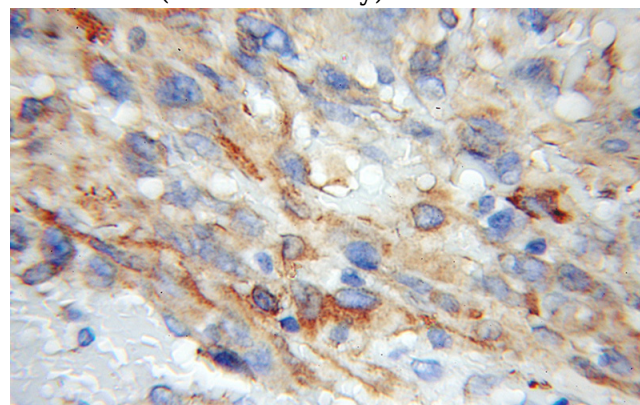
Dilutions

Recommended Dilution:

Validations



human brain tissue were subjected to SDS PAGE followed by western blot with Catalog No:114579(RCN2 antibody) at dilution of 1:400

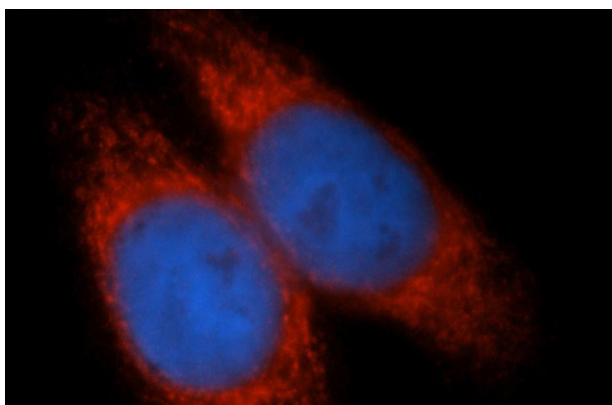


Immunohistochemical of paraffin-embedded human gliomas using Catalog No:114579(RCN2 antibody) at dilution of 1:50 (under 10x lens)

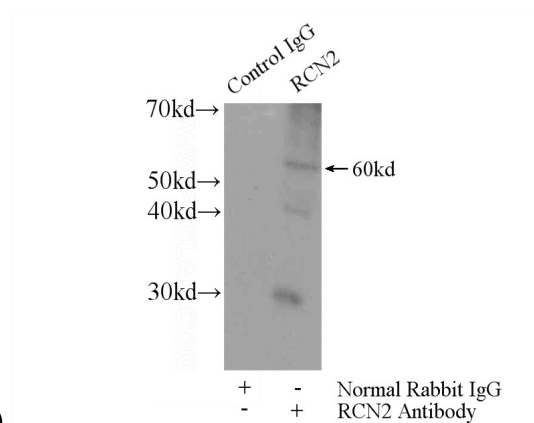
RCN2 antibody



Catalog Number: 114579



Immunofluorescent analysis of HepG2 cells, using RCN2 antibody Catalog No:114579 at 1:50 dilution and Rhodamine-labeled goat anti-rabbit IgG (red). Blue pseudocolor = DAPI (fluorescent



DNA dye).

IP Result of anti-RCN2 (IP:Catalog No:114579, 4ug; Detection:Catalog No:114579 1:400) with mouse lung tissue lysate 2800ug.