

RCC1 antibody



Catalog Number: 114577

Product name

RCC1 antibody

Recommended Dilution:

WB: 1:500-1:5000

Specificity

Human, Mouse, Rat, Monkey; other species not tested.

IP: 1:500-1:5000

IHC: 1:20-1:200

IF: 1:20-1:200

Antibody description

RCC1 Rabbit Polyclonal antibody. Positive WB detected in HeLa cells, A431 cells, COS-7 cells, HEK-293 cells, HepG2 cells, Jurkat cells, NIH/3T3 cells, SH-SY5Y cells. Positive IP detected in HEK-293 cells. Positive IF detected in A431 cells. Positive IHC detected in human testis tissue, human small intestine tissue. Observed molecular weight by Western-blot: 45-50 kDa

Preparation

This antibody was obtained by immunization of RCC1 recombinant protein (Accession Number: NM_001048199). Purification method: Antigen affinity purified.

Formulation

PBS with 0.02% sodium azide and 50% glycerol pH 7.3.

Storage

Store at -20°C. DO NOT ALIQUOT

Clonality

Polyclonal

Ig Type

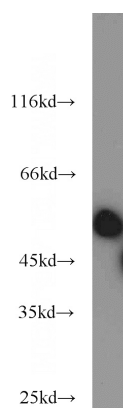
Rabbit IgG

Applications

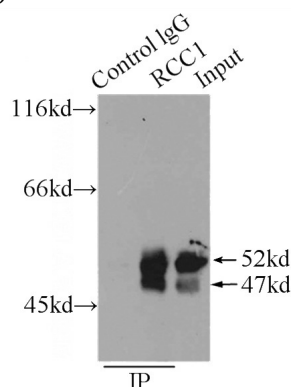
ELISA, WB, IHC, IP, IF

Dilutions

Validations



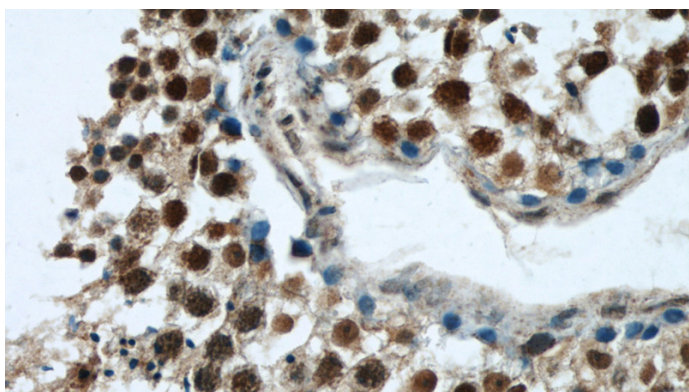
HeLa cells were subjected to SDS PAGE followed by western blot with Catalog No:114577(RCC1 antibody) at dilution of 1:1000



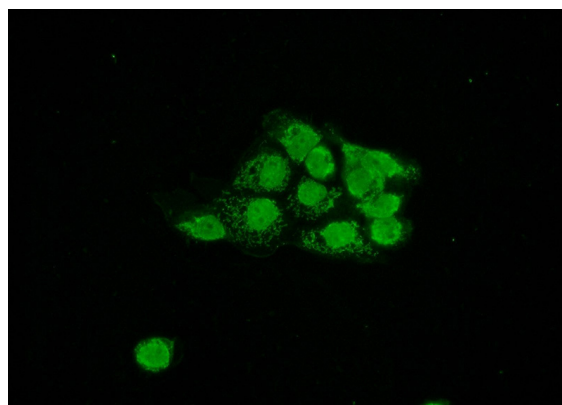
IP Result of anti-RCC1 (IP:Catalog No:114577, 3ug; Detection:Catalog No:114577 1:1000) with HEK-293 cells lysate 1000ug.

RCC1 antibody

Catalog Number: 114577



Immunohistochemical of paraffin-embedded human testis using Catalog No:114577(RCC1 antibody) at dilution of 1:50 (under 40x lens)



Immunofluorescent analysis of A431 cells using Catalog No:114577(RCC1 Antibody) at dilution of 1:50 and Alexa Fluor 488-conjugated AffiniPure Goat Anti-Rabbit IgG(H+L)