

# RCC1 antibody

Catalog Number: 114575

## Product name

RCC1 antibody

WB: 1:1000-1:10000

IP: 1:500-1:5000

## Specificity

Human, Mouse, Rat; other species not tested.

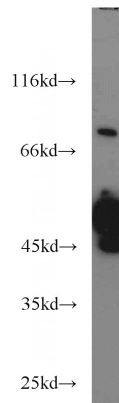
IHC: 1:20-1:200

IF: 1:20-1:200

## Antibody description

RCC1 Rabbit Polyclonal antibody. Positive IHC detected in human testis tissue, human small intestine tissue. Positive IF detected in HepG2 cells. Positive WB detected in HeLa cells, HepG2 cells, mouse colon tissue, SH-SY5Y cells. Positive IP detected in HeLa cells. Observed molecular weight by Western-blot: 45-50 kDa, 68 kDa

## Validations



## Preparation

This antibody was obtained by immunization of RCC1 recombinant protein (Accession Number: NM\_001048199). Purification method: Antigen affinity purified.

HeLa cells were subjected to SDS PAGE followed by western blot with Catalog No:114575(RCC1 antibody) at dilution of 1:1000

## Formulation

PBS with 0.02% sodium azide and 50% glycerol pH 7.3.

## Storage

Store at -20°C. DO NOT ALIQUOT

## Clonality

Polyclonal

## Ig Type

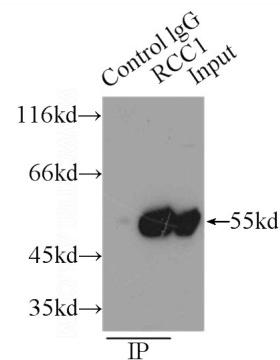
Rabbit IgG

## Applications

ELISA, WB, IHC, IP, IF

## Dilutions

Recommended Dilution:

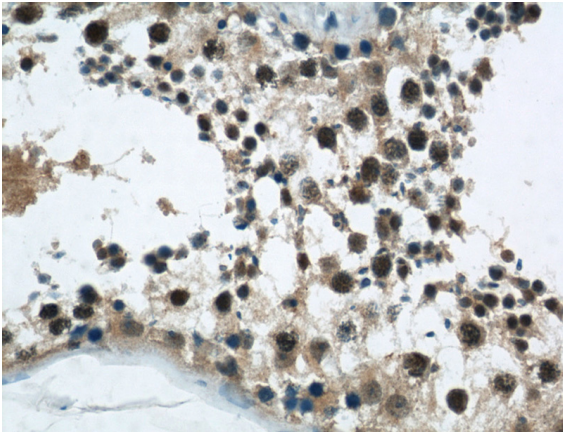


IP Result of anti-RCC1 (IP:Catalog No:114575, 3ug; Detection:Catalog No:114575 1:1500) with HeLa cells lysate 3000ug.

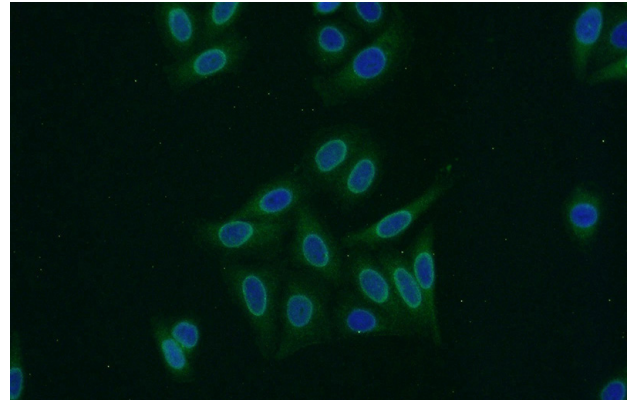
# RCC1 antibody

Catalog Number: 114575

---



Immunohistochemical of paraffin-embedded human testis using Catalog No:114575(RCC1 antibody) at dilution of 1:50 (under 40x lens)



Immunofluorescent analysis of HepG2 cells using Catalog No:114575(RCC1 Antibody) at dilution of 1:50 and Alexa Fluor 488-conjugated AffiniPure Goat Anti-Rabbit IgG(H+L)