

RBPJL antibody



Catalog Number: 114566

Product name

RBPJL antibody

Specificity

Human; other species not tested.

Antibody description

RBPJL Rabbit Polyclonal antibody. Positive WB detected in Jurkat cells, Raji cells. Observed molecular weight by Western-blot: 57-69 kDa

Preparation

This antibody was obtained by immunization of RBPJL recombinant protein (Accession Number: NM_014276). Purification method: Antigen affinity purified.

Formulation

PBS with 0.1% sodium azide and 50% glycerol pH 7.3.

Storage

Store at -20°C. DO NOT ALIQUOT

Clonality

Polyclonal

Ig Type

Rabbit IgG

Applications

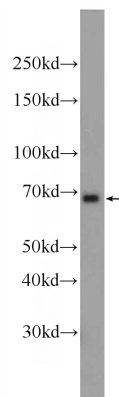
ELISA, WB

Dilutions

Recommended Dilution:

WB: 1:500-1:5000

Validations



Jurkat cells were subjected to SDS PAGE followed by western blot with Catalog No:114566(RBPJL Antibody) at dilution of 1:1500