

RBPJ antibody



Catalog Number: 114565

Product name

RBPJ antibody

Specificity

Human, Mouse; other species not tested.

Antibody description

RBPJ Rabbit Polyclonal antibody. Positive IHC detected in human pancreas cancer tissue. Positive WB detected in mouse kidney tissue, HEK-293 cells, HeLa cells, HepG2 cells, human heart tissue, human liver tissue, MCF7 cells, mouse pancreas tissue. Positive IP detected in HEK-293 cells. Observed molecular weight by Western-blot: 60 kDa

Preparation

This antibody was obtained by immunization of RBPJ recombinant protein (Accession Number: XM_017008174). Purification method: Antigen affinity purified.

Formulation

PBS with 0.02% sodium azide and 50% glycerol pH 7.3.

Storage

Store at -20°C. DO NOT ALIQUOT

Clonality

Polyclonal

Ig Type

Rabbit IgG

Applications

ELISA, WB, IHC, IP

Dilutions

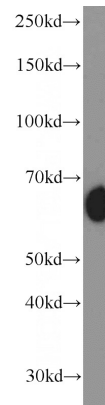
Recommended Dilution:

WB: 1:500-1:5000

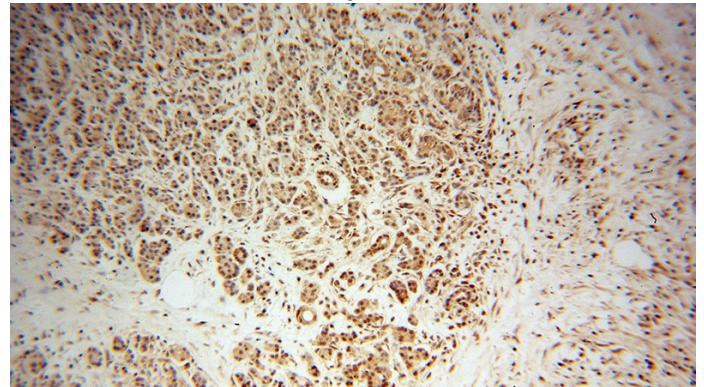
IP: 1:500-1:5000

IHC: 1:20-1:200

Validations



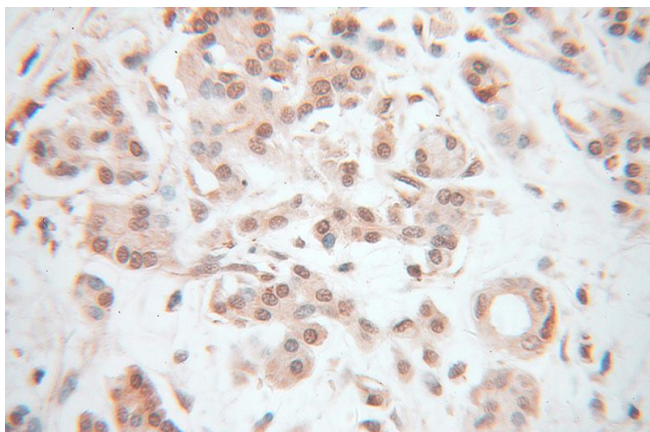
mouse kidney tissue were subjected to SDS PAGE followed by western blot with Catalog No:114565(RBPJ antibody) at dilution of 1:1000



Immunohistochemical of paraffin-embedded human pancreas cancer using Catalog No:114565(RBPJ antibody) at dilution of 1:100 (under 10x lens)

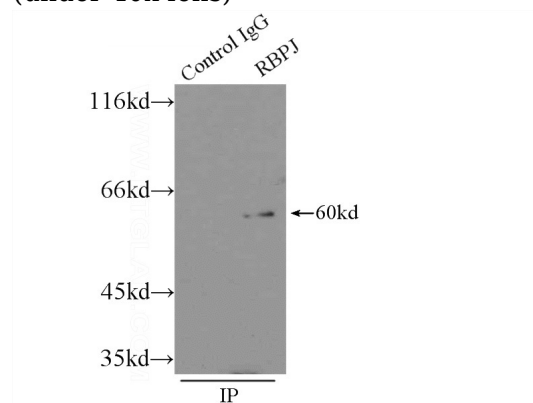
RBPJ antibody

Catalog Number: 114565



Immunohistochemical of paraffin-embedded human pancreas cancer using Catalog No:114565(RBPJ antibody) at dilution of 1:100

(under 40x lens)



IP Result of anti-RBPJ (IP:Catalog No:114565, 3ug; Detection:Catalog No:114565 1:1000) with HEK-293 cells lysate 4500ug.