

# RBP3 antibody

Catalog Number: 114561

## Product name

RBP3 antibody

IP: 1:200-1:1000

IHC: 1:20-1:200

## Specificity

Human, Mouse, Rat; other species not tested.

## Antibody description

RBP3 Rabbit Polyclonal antibody. Positive WB detected in mouse eye tissue, Y79 cells. Positive IP detected in Y79 cells. Positive IHC detected in human eye tissue. Observed molecular weight by Western-blot: 140 kDa

## Preparation

This antibody was obtained by immunization of RBP3 recombinant protein (Accession Number: NM\_002900). Purification method: Antigen affinity purified.

## Formulation

PBS with 0.02% sodium azide and 50% glycerol pH 7.3.

## Storage

Store at -20°C. DO NOT ALIQUOT

## Clonality

Polyclonal

## Ig Type

Rabbit IgG

## Applications

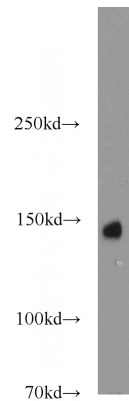
ELISA, IHC, IP, WB

## Dilutions

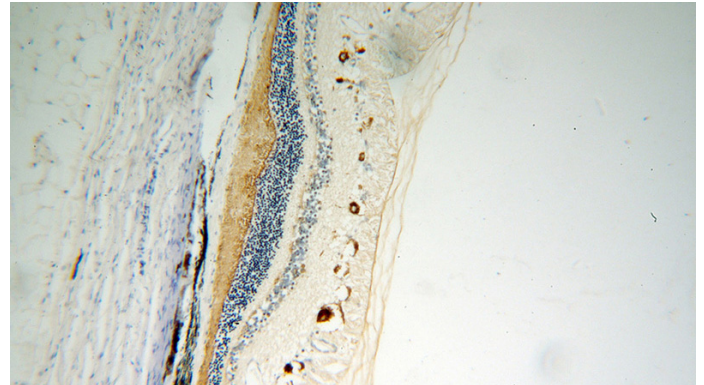
Recommended Dilution:

WB: 1:200-1:2000

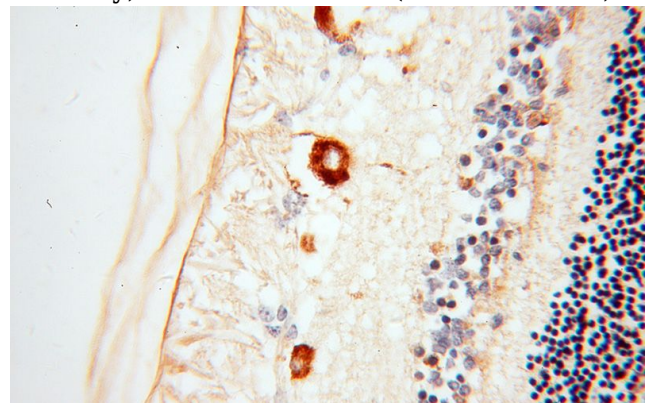
## Validations



mouse eye tissue were subjected to SDS PAGE followed by western blot with Catalog No:114561(RBP3 antibody) at dilution of 1:600



Immunohistochemical of paraffin-embedded human eye using Catalog No:114561(RBP3 antibody) at dilution of 1:50 (under 10x lens)

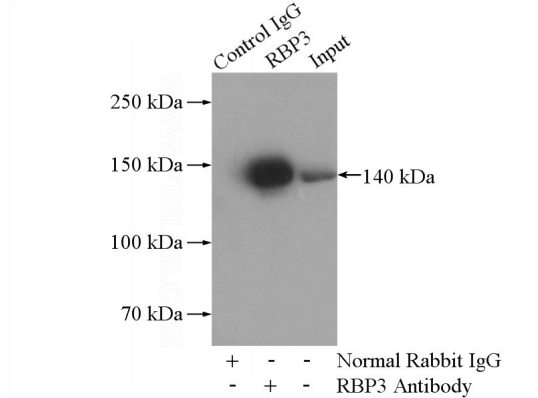


Immunohistochemical of paraffin-embedded human eye using Catalog No:114561(RBP3

# RBP3 antibody

Catalog Number: 114561

antibody) at dilution of 1:50 (under 40x lens)



IP Result of anti-RBP3 (IP:Catalog No:114561, 4ug; Detection:Catalog No:114561 1:400) with Y79 cells lysate 2000ug.