

RBMS1 antibody

Catalog Number: 114555

Product name

RBMS1 antibody

IP: 1:200-1:2000

IF: 1:20-1:200

Specificity

Human, Mouse, Rat; other species not tested.

Antibody description

RBMS1 Rabbit Polyclonal antibody. Positive WB detected in HeLa cells. Positive IP detected in HeLa cells. Positive IF detected in HepG2 cells. Observed molecular weight by Western-blot: 45 kDa

Preparation

This antibody was obtained by immunization of RBMS1 recombinant protein (Accession Number: NM_016836). Purification method: Antigen affinity purified.

Formulation

PBS with 0.1% sodium azide and 50% glycerol pH 7.3.

Storage

Store at -20°C. DO NOT ALIQUOT

Clonality

Polyclonal

Ig Type

Rabbit IgG

Applications

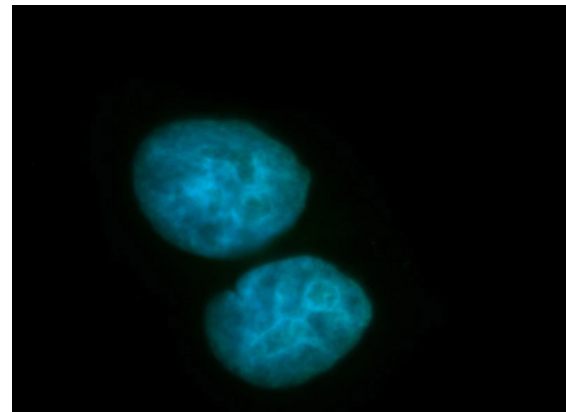
ELISA, IF, WB, IP

Dilutions

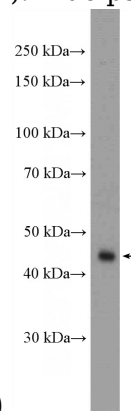
Recommended Dilution:

WB: 1:500-1:5000

Validations

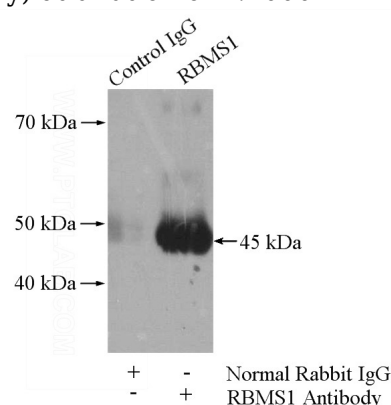


Immunofluorescent analysis of HepG2 cells, using RBMS1 antibody Catalog No:114555 at 1:100 dilution and FITC-labeled donkey anti-rabbit IgG(green). Blue pseudocolor = DAPI (fluorescent



DNA dye).

HeLa cells were subjected to SDS PAGE followed by western blot with Catalog No:114555(RBMS1 Antibody) at dilution of 1:1000



RBMS1 antibody



Catalog Number: 114555

IP Result of anti-RBMS1 (IP:Catalog No:114555,

4ug; Detection:Catalog No:114555 1:500) with HeLa cells lysate 1200ug.