

RBM8A,Y14 antibody



Catalog Number: 114554

Product name

RBM8A,Y14 antibody

Specificity

Human,Mouse,Rat; other species not tested.

Antibody description

RBM8A,Y14 Rabbit Polyclonal antibody. Positive WB detected in HeLa cells, Jurkat cells. Positive IP detected in HeLa cells. Positive IHC detected in human ovary tissue, human brain tissue, human kidney tissue, human lung tissue, human placenta tissue, human skin tissue, human spleen tissue, human testis tissue. Observed molecular weight by Western-blot: 24 kDa

Preparation

This antibody was obtained by immunization of RBM8A,Y14 recombinant protein (Accession Number: NM_005105). Purification method: Antigen affinity purified.

Formulation

PBS with 0.02% sodium azide and 50% glycerol pH 7.3.

Storage

Store at -20°C. DO NOT ALIQUOT

Clonality

Polyclonal

Ig Type

Rabbit IgG

Applications

ELISA, WB, IHC, IP

Dilutions

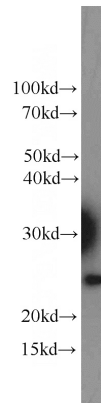
Recommended Dilution:

WB: 1:200-1:2000

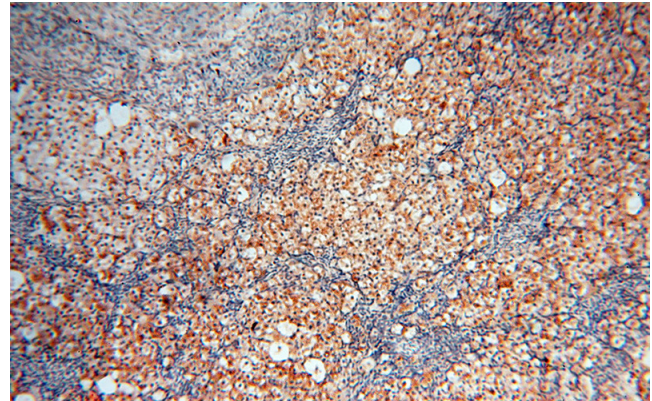
IP: 1:200-1:2000

IHC: 1:20-1:200

Validations



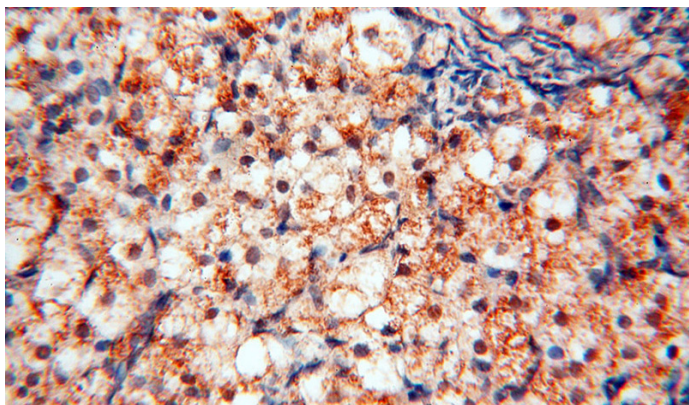
HeLa cells were subjected to SDS PAGE followed by western blot with Catalog No:114554(RBM8A,Y14 antibody) at dilution of 1:500



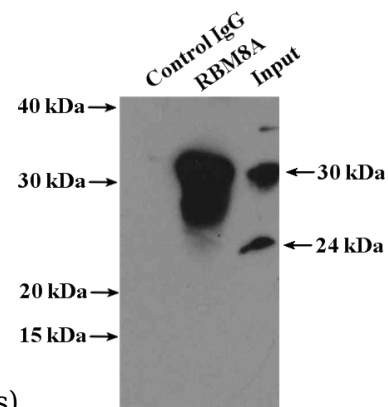
Immunohistochemical of paraffin-embedded human ovary using Catalog No:114554(RBM8A,Y14 antibody) at dilution of 1:100 (under 10x lens)

RBM8A,Y14 antibody

Catalog Number: 114554



Immunohistochemical of paraffin-embedded human ovary using Catalog No:114554(RBM8A,Y14 antibody) at dilution of



1:100 (under 40x lens)

IP Result of anti-RBM8A,Y14 (IP:Catalog No:114554, 4ug; Detection:Catalog No:114554 1:500) with HeLa cells lysate 3200ug.