

RAD17 antibody

Catalog Number: 114510

Product name

RAD17 antibody

IHC: 1:20-1:200

IF: 1:20-1:200

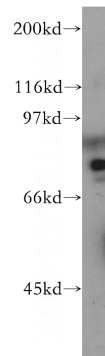
Specificity

Human, Mouse, Rat; other species not tested.

Validations

Antibody description

RAD17 Rabbit Polyclonal antibody. Positive IF detected in Hela cells. Positive IHC detected in human breast cancer tissue. Positive WB detected in K-562 cells. Observed molecular weight by Western-blot: 71kd



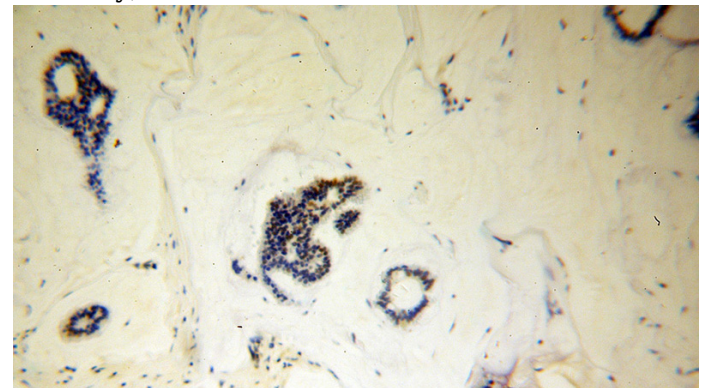
Preparation

This antibody was obtained by immunization of RAD17 recombinant protein (Accession Number: XM_047417456). Purification method: Antigen affinity purified.

K-562 cells were subjected to SDS PAGE followed by western blot with Catalog No:114510(RAD17 antibody) at dilution of 1:400

Formulation

PBS with 0.02% sodium azide and 50% glycerol pH 7.3.



Storage

Store at -20°C. DO NOT ALIQUOT

Clonality

Polyclonal

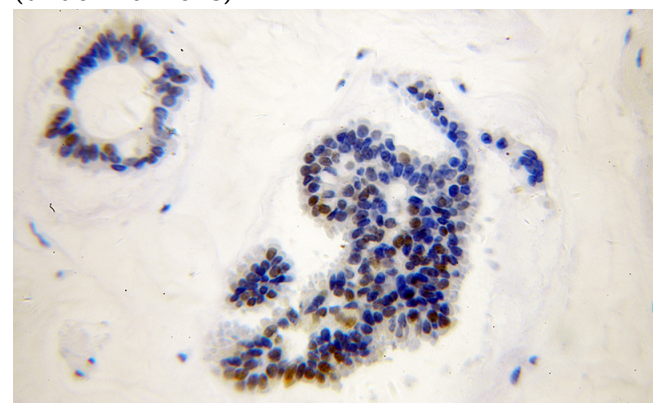
Immunohistochemical of paraffin-embedded human breast cancer using Catalog No:114510(RAD17 antibody) at dilution of 1:100 (under 10x lens)

Ig Type

Rabbit IgG

Applications

ELISA, WB, IHC, IF



Dilutions

Recommended Dilution:

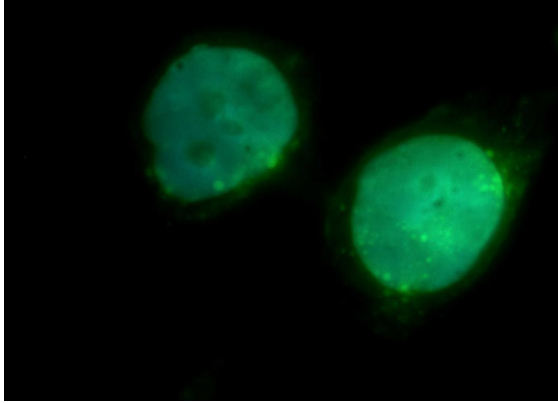
WB: 1:500-1:5000

Immunohistochemical of paraffin-embedded

RAD17 antibody

Catalog Number: 114510

human breast cancer using Catalog No:114510(RAD17 antibody) at dilution of 1:100 (under 40x lens)



Immunofluorescent analysis of HeLa cells, using RAD17 antibody Catalog No:114510 at 1:50 dilution and FITC-labeled donkey anti-rabbit IgG (green). Blue pseudocolor = DAPI (fluorescent DNA dye).