

RAD1 antibody

Catalog Number: 114509

Product name

RAD1 antibody

IP: 1:200-1:1000

IHC: 1:20-1:200

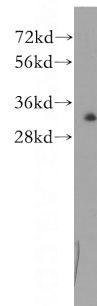
Specificity

Human, Mouse, Rat; other species not tested.

Antibody description

RAD1 Rabbit Polyclonal antibody. Positive WB detected in HeLa cells. Positive IP detected in HeLa cells. Positive IHC detected in human lymphoma tissue. Observed molecular weight by Western-blot: 32kd

Validations



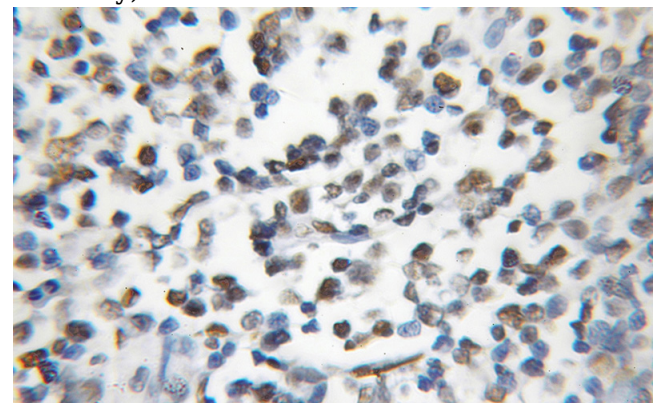
Preparation

This antibody was obtained by immunization of RAD1 recombinant protein (Accession Number: NM_002853). Purification method: Antigen affinity purified.

HeLa cells were subjected to SDS PAGE followed by western blot with Catalog No:114509(RAD1 antibody) at dilution of 1:300

Formulation

PBS with 0.1% sodium azide and 50% glycerol pH 7.3.



Storage

Store at -20°C. DO NOT ALIQUOT

Clonality

Polyclonal

Immunohistochemical of paraffin-embedded human lymphoma using Catalog No:114509(RAD1 antibody) at dilution of 1:50 (under 10x lens)

Ig Type

Rabbit IgG

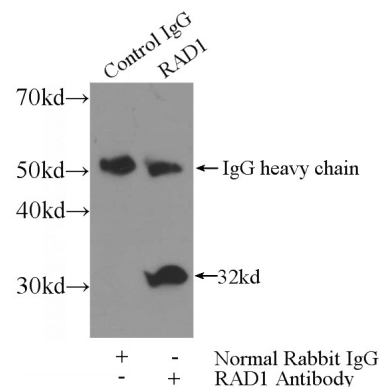
Applications

ELISA, WB, IHC, IP

Dilutions

Recommended Dilution:

WB: 1:200-1:2000



IP Result of anti-RAD1 (IP:Catalog No:114509, 3ug; Detection:Catalog No:114509 1:300) with

RAD1 antibody



Catalog Number: 114509

HeLa cells lysate 3200ug.