

# RB1CC1 antibody



Catalog Number: 114490

## Product name

WB: 1:500-1:5000

RB1CC1 antibody

IP: 1:200-1:2000

## Specificity

IHC: 1:20-1:200

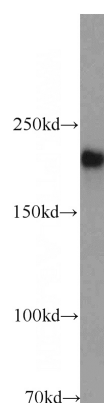
Human, Mouse, Rat; other species not tested.

IF: 1:10-1:100

## Antibody description

RB1CC1 Rabbit Polyclonal antibody. Positive IP detected in HEK-293 cells. Positive WB detected in HEK-293 cells, Jurkat cells, K-562 cells, MCF7 cells. Positive IF detected in HepG2 cells, MCF-7 cells. Positive IHC detected in human liver cancer tissue, human breast cancer tissue. Observed molecular weight by Western-blot: 200kd

## Validations



HEK-293 cells were subjected to SDS PAGE followed by western blot with Catalog No:114490(RB1CC1 antibody) at dilution of

## Preparation

This antibody was obtained by immunization of RB1CC1 recombinant protein (Accession Number: XM\_011517643). Purification method: Antigen affinity purified.

## Formulation

PBS with 0.02% sodium azide and 50% glycerol pH 7.3.

## Storage

Store at -20°C. DO NOT ALIQUOT

## Clonality

Polyclonal

## Ig Type

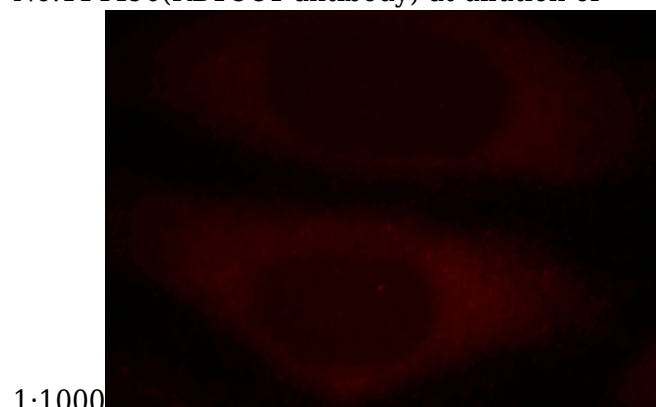
Rabbit IgG

## Applications

ELISA, WB, IF, IHC, IP

## Dilutions

Recommended Dilution:



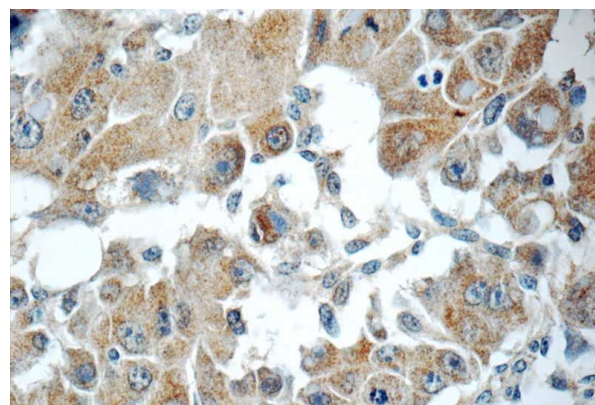
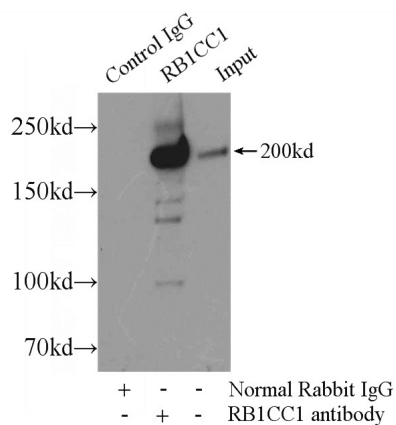
Immunofluorescent analysis of HepG2 cells, using RB1CC1 antibody Catalog No:114490 at 1:25 dilution and Rhodamine-labeled goat anti-rabbit

# RB1CC1 antibody

Catalog Number: 114490

IgG (red).

IP Result of anti-RB1CC1 (IP:Catalog No:114490, 5ug; Detection:Catalog No:114490 1:500) with HEK-293 cells lysate 2500ug.



Immunohistochemistry of paraffin-embedded human liver cancer tissue slide using Catalog No:114490(RB1CC1 Antibody) at dilution of 1:50 (under 40x lens)