

RB1 antibody

Catalog Number: 114489

Product name

RB1 antibody

IP: 1:200-1:2000

IHC: 1:20-1:200

Specificity

Human, Mouse; other species not tested.

Antibody description

RB1 Rabbit Polyclonal antibody. Positive IP detected in A431 cells. Positive WB detected in Jurkat cells, A431 cells. Positive IHC detected in human prostate cancer tissue, human lung cancer tissue. Observed molecular weight by Western-blot: 110kd

Preparation

This antibody was obtained by immunization of RB1 recombinant protein (Accession Number: NM_000321). Purification method: Protein A purified.

Formulation

PBS with 0.1% sodium azide and 50% glycerol pH 7.3.

Storage

Store at -20°C. DO NOT ALIQUOT

Clonality

Polyclonal

Ig Type

Rabbit IgG

Applications

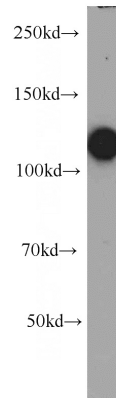
ELISA, WB, IHC, IP

Dilutions

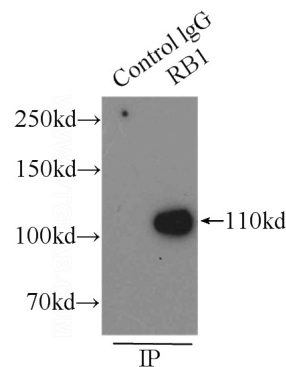
Recommended Dilution:

WB: 1:1000-1:10000

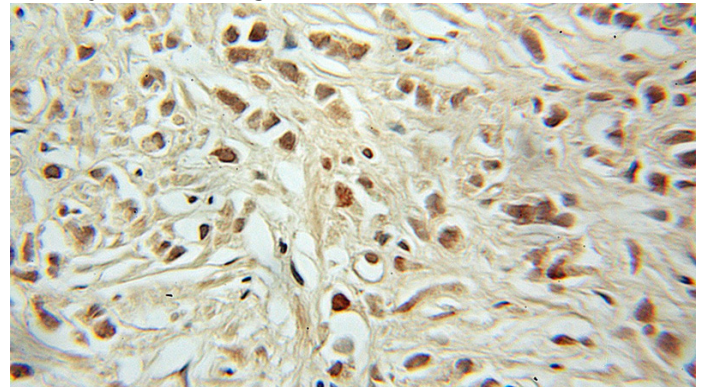
Validations



Jurkat cells were subjected to SDS PAGE followed by western blot with Catalog No:114489(RB1 antibody) at dilution of 1:3000



IP Result of anti-RB1 (IP:Catalog No:114489, 3ug; Detection:Catalog No:114489 1:500) with A431 cells lysate 3000ug.



Immunohistochemical of paraffin-embedded human prostate cancer using Catalog

RB1 antibody



Catalog Number: 114489

No:114489(RB1 antibody) at dilution of 1:200 (under 10x lens)