

RASGEF1B antibody



Catalog Number: 114476

Product name

RASGEF1B antibody

Specificity

human, mouse, rat; other species not tested.

Antibody description

RASGEF1B Rabbit Polyclonal antibody. Positive IHC detected in human stomach. Positive WB detected in human brain tissue, mouse lung tissue, mouse ovary tissue. Observed molecular weight by Western-blot: 50kd

Preparation

This antibody was obtained by immunization of RASGEF1B recombinant protein (Accession Number: BC036784). Purification method: Antigen affinity purified.

Formulation

PBS with 0.02% sodium azide and 50% glycerol pH 7.3.

Storage

Store at -20°C. DO NOT ALIQUOT

Clonality

Polyclonal

Ig Type

Rabbit IgG

Applications

ELISA, WB, IHC

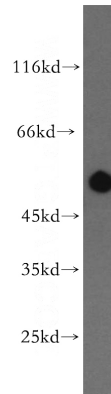
Dilutions

Recommended Dilution:

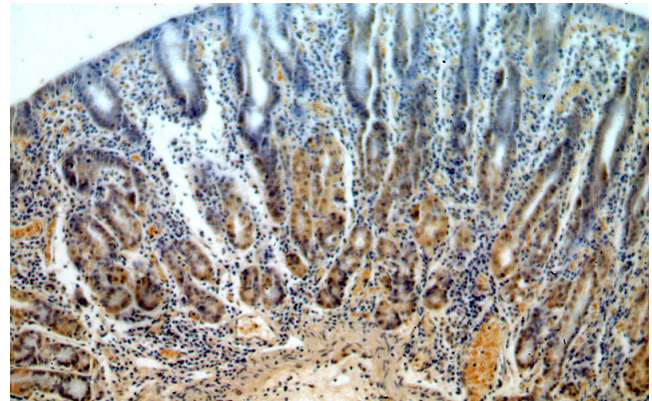
WB: 1:200-1:2000

IHC: 1:20-1:200

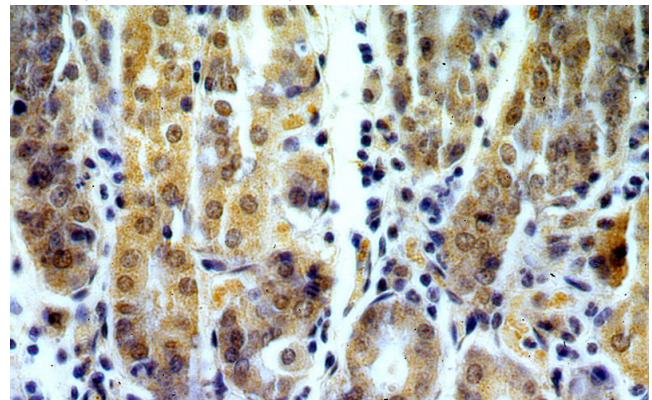
Validations



human brain tissue were subjected to SDS PAGE followed by western blot with Catalog No:114476(RASGEF1B antibody) at dilution of 1:300



Immunohistochemical of paraffin-embedded human stomach using Catalog No:114476(RASGEF1B antibody) at dilution of 1:50 (under 10x lens)



Immunohistochemical of paraffin-embedded

RASGEF1B antibody



Catalog Number: 114476

human stomach using Catalog

No:114476(RASGEF1B antibody) at dilution of
1:50 (under 40x lens)