

# RAB9B antibody

Catalog Number: 114465

## Product name

RAB9B antibody

## Specificity

Human, Mouse, Rat; other species not tested.

## Antibody description

RAB9B Rabbit Polyclonal antibody. Positive WB detected in HepG2 cells, HeLa cells, mouse brain tissue. Positive IF detected in HepG2 cells, HeLa. Observed molecular weight by Western-blot: 23-25kd

## Preparation

This antibody was obtained by immunization of RAB9B recombinant protein (Accession Number: NM\_016370). Purification method: Antigen affinity purified.

## Formulation

PBS with 0.02% sodium azide and 50% glycerol pH 7.3.

## Storage

Store at -20°C. DO NOT ALIQUOT

## Clonality

Polyclonal

## Ig Type

Rabbit IgG

## Applications

ELISA, WB, IF

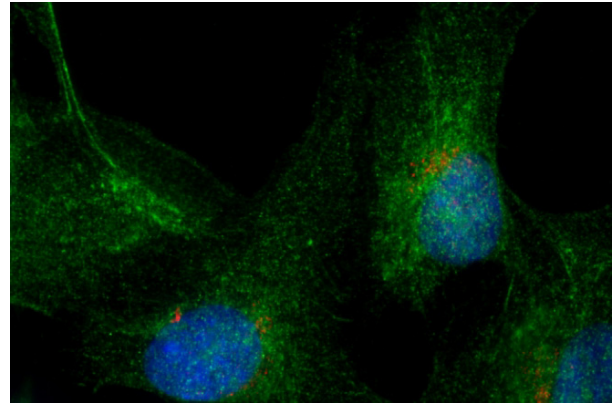
## Dilutions

Recommended Dilution:

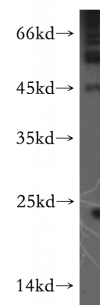
WB: 1:200-1:2000

IF: 1:10-1:100

## Validations

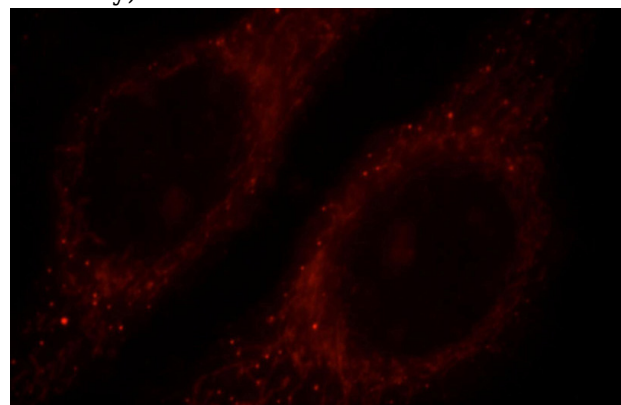


IF result of RAB9B antibody (Catalog No:114465, 1:200) detected with PFA fixed HeLa cells. Green: RAB9B antibody stains late endosomes. Red, Golgi



stain.

HepG2 cells were subjected to SDS PAGE followed by western blot with Catalog No:114465(RAB9B antibody) at dilution of 1:300



Immunofluorescent analysis of HepG2 cells, using RAB9B antibody Catalog No:114465 at 1:25 dilution and Rhodamine-labeled goat anti-rabbit

# RAB9B antibody



Catalog Number: 114465

---

IgG (red).