

# RAB6B antibody

Catalog Number: 114457

## Product name

RAB6B antibody

IP: 1:500-1:5000

IHC: 1:20-1:200

## Specificity

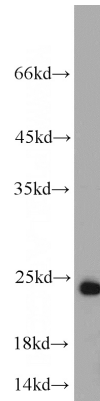
Human, Mouse, Rat; other species not tested.

IF: 1:10-1:100

## Antibody description

RAB6B Rabbit Polyclonal antibody. Positive IP detected in mouse brain tissue. Positive WB detected in mouse brain tissue, C6 cells, rat brain tissue. Positive IF detected in C6 cells. Positive IHC detected in human gliomas tissue. Observed molecular weight by Western-blot: 24 kDa

## Validations



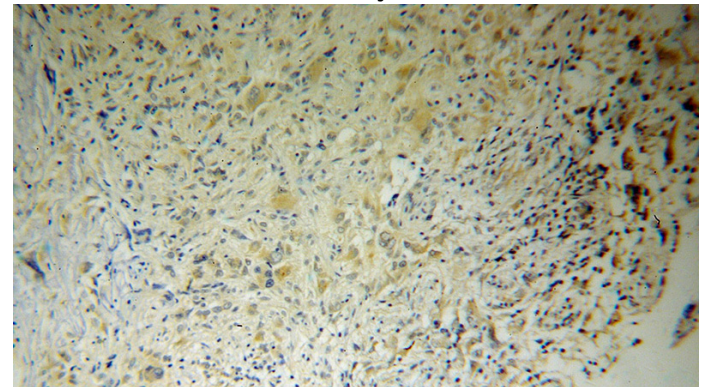
## Preparation

This antibody was obtained by immunization of RAB6B recombinant protein (Accession Number: NM\_016577). Purification method: Antigen affinity purified.

mouse brain tissue were subjected to SDS PAGE followed by western blot with Catalog No:114457(RAB6B antibody) at dilution of 1:1000

## Formulation

PBS with 0.1% sodium azide and 50% glycerol pH 7.3.



## Storage

Store at -20°C. DO NOT ALIQUOT

## Clonality

Polyclonal

## Ig Type

Rabbit IgG

## Applications

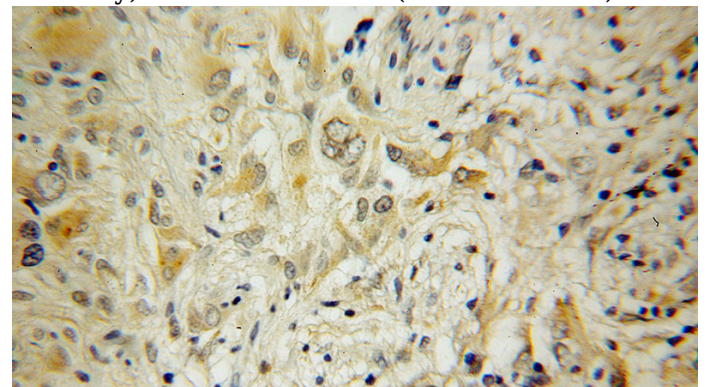
ELISA, WB, IHC, IF, IP

## Dilutions

Recommended Dilution:

WB: 1:500-1:5000

Immunohistochemical of paraffin-embedded human gliomas using Catalog No:114457(RAB6B antibody) at dilution of 1:50 (under 10x lens)

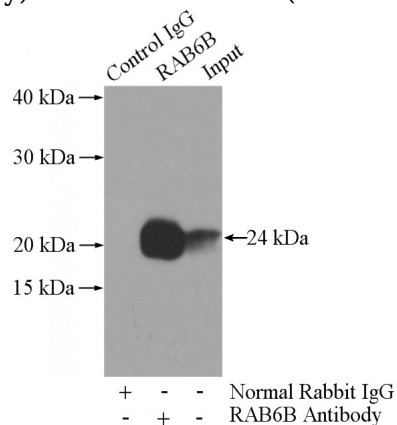


Immunohistochemical of paraffin-embedded

# RAB6B antibody

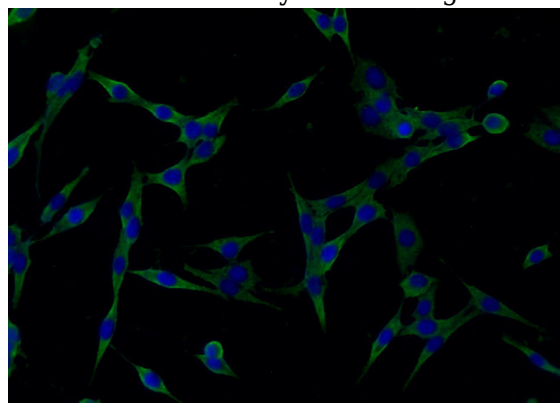
Catalog Number: 114457

human gliomas using Catalog No:114457(RAB6B antibody) at dilution of 1:50 (under 40x lens)



IP Result of anti-RAB6B (IP:Catalog No:114457, 3ug; Detection:Catalog No:114457 1:1000) with

mouse brain tissue lysate 4000ug.



Immunofluorescent analysis of C6 cells using Catalog No:114457(RAB6B Antibody) at dilution of 1:25 and Alexa Fluor 488-conjugated AffiniPure Goat Anti-Rabbit IgG(H+L)