

# RAB3GAP1 antibody



Catalog Number: 114445

## Product name

RAB3GAP1 antibody

## Specificity

Human, Mouse, Rat; other species not tested.

## Antibody description

RAB3GAP1 Rabbit Polyclonal antibody. Positive IP detected in mouse kidney tissue. Positive WB detected in HEK-293 cells, HL-60 cells, human brain tissue, mouse heart tissue, mouse kidney tissue. Positive IF detected in HepG2 cells, Hela cells. Positive IHC detected in human testis tissue, human brain tissue, human kidney tissue. Observed molecular weight by Western-blot: 130 kDa

## Preparation

This antibody was obtained by immunization of RAB3GAP1 recombinant protein (Accession Number: BC146809). Purification method: Antigen affinity purified.

## Formulation

PBS with 0.02% sodium azide and 50% glycerol pH 7.3.

## Storage

Store at -20°C. DO NOT ALIQUOT

## Clonality

Polyclonal

## Ig Type

Rabbit IgG

## Applications

ELISA, WB, IHC, IF, IP

## Dilutions

Recommended Dilution:

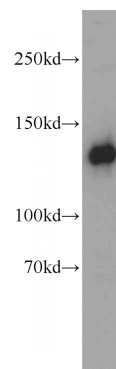
WB: 1:1000-1:10000

IP: 1:200-1:2000

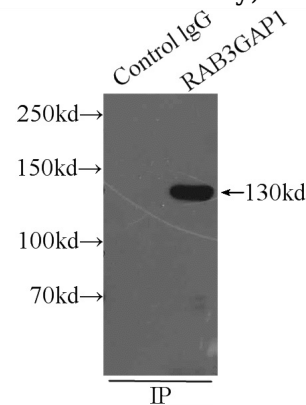
IHC: 1:20-1:200

IF: 1:10-1:100

## Validations



HEK-293 cells were subjected to SDS PAGE followed by western blot with Catalog No:114445(RAB3GAP1 antibody) at dilution of

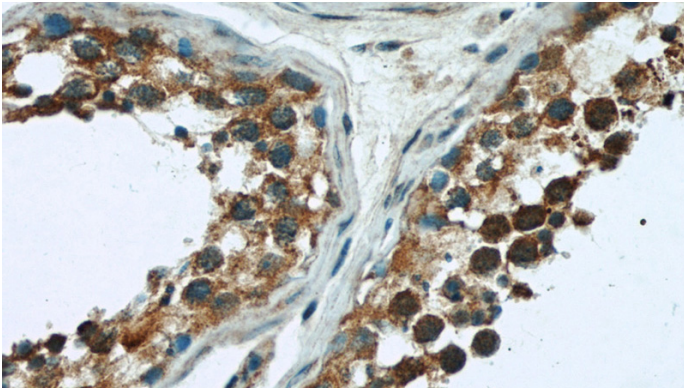


1:500

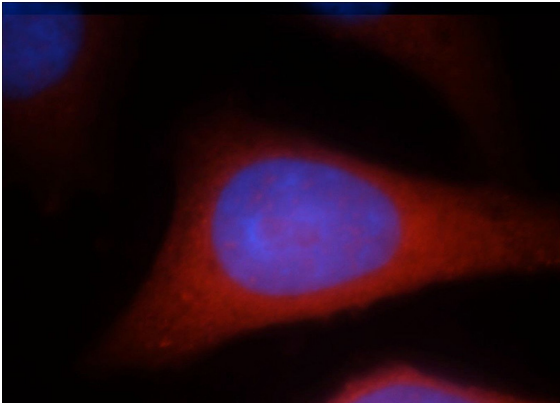
IP Result of anti-RAB3GAP1 (IP:Catalog No:114445, 5ug; Detection:Catalog No:114445 1:500) with mouse kidney tissue lysate 6000ug.

# RAB3GAP1 antibody

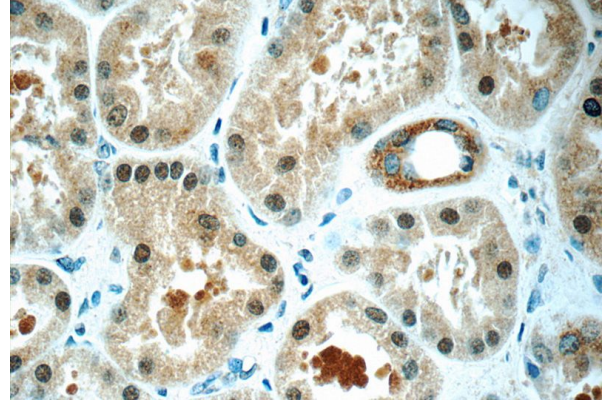
Catalog Number: 114445



Immunohistochemical of paraffin-embedded human testis using Catalog No:114445(RAB3GAP1 antibody) at dilution of 1:100 (under 40x lens)



Immunofluorescent analysis of HepG2 cells, using RAB3GAP1 antibody Catalog No:114445 at 1:25 dilution and Rhodamine-labeled goat anti-rabbit IgG (red). Blue pseudocolor = DAPI (fluorescent DNA dye).



Immunohistochemistry of paraffin-embedded human kidney tissue slide using Catalog No:114445(RAB3GAP1 Antibody) at dilution of 1:50 (under 40x lens)