

# RAB3D antibody

Catalog Number: 114444

## Product name

RAB3D antibody

## Immunogen

[Human RAB3D Recombinant protein \(GST tag\)](#)

## Specificity

Human, Mouse, Rat; other species not tested.

## Antibody description

RAB3D Rabbit Polyclonal antibody. Positive IHC detected in human prostate cancer tissue, human breast cancer tissue. Positive IP detected in SW 1990 cells. Positive WB detected in mouse lung tissue, A549 cells, human cerebellum tissue, human stomach tissue, mouse spleen tissue, mouse stomach tissue, SW 1990 cells. Observed molecular weight by Western-blot: 28 kDa

## Preparation

This antibody was obtained by immunization of RAB3D recombinant protein (Accession Number: NM\_004283). Purification method: Antigen affinity purified.

## Formulation

PBS with 0.1% sodium azide and 50% glycerol pH 7.3.

## Storage

Store at -20°C. DO NOT ALIQUOT

## Clonality

Polyclonal

## Ig Type

Rabbit IgG

## Applications

ELISA, IHC, IP, WB

## Dilutions

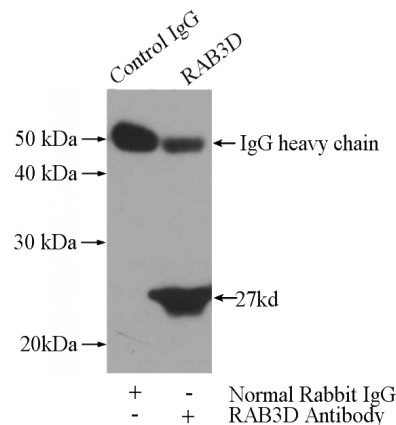
Recommended Dilution:

WB: 1:500-1:5000

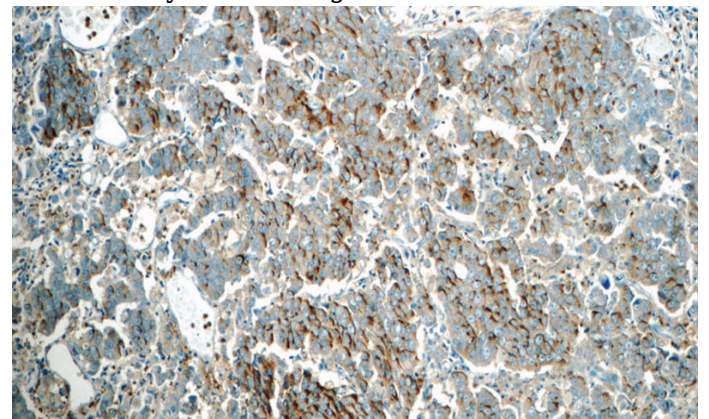
IP: 1:200-1:2000

IHC: 1:20-1:200

## Validations



IP Result of anti-RAB3D (IP:Catalog No:114444, 3ug; Detection:Catalog No:114444 1:600) with SW 1990 cells lysate 2400ug.

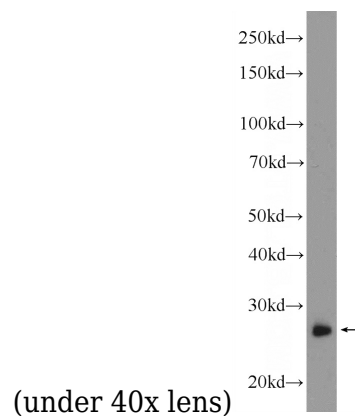
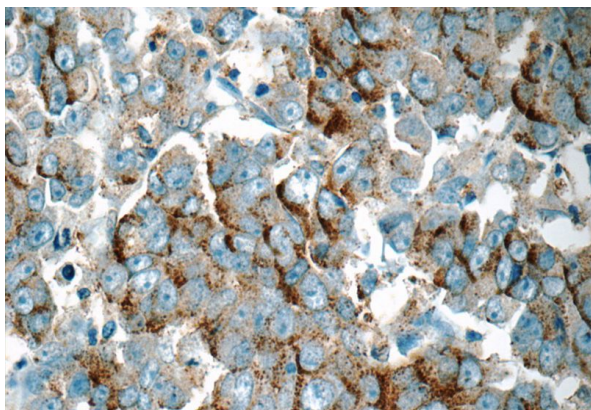


Immunohistochemistry of paraffin-embedded human prostate cancer tissue slide using Catalog No:114444(RAB3D Antibody) at dilution of 1:50 (under 10x lens)

# RAB3D antibody

Catalog Number: 114444

---



Immunohistochemistry of paraffin-embedded human prostate cancer tissue slide using Catalog No:114444(RAB3D Antibody) at dilution of 1:50

mouse lung tissue were subjected to SDS PAGE followed by western blot with Catalog No:114444(RAB3D Antibody) at dilution of 1:1200