

RAB27B antibody

Catalog Number: 114427

Product name

RAB27B antibody

WB: 1:500-1:5000

IHC: 1:20-1:200

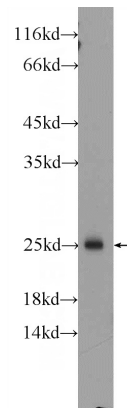
Specificity

Human, Mouse, Rat; other species not tested.

Antibody description

RAB27B Rabbit Polyclonal antibody. Positive IHC detected in human liver cancer tissue, human breast cancer tissue, human prostate cancer tissue, human testis tissue. Positive WB detected in rat spleen tissue, A375 cells, DU 145 cells, MCF7 cells, PC-3 cells. Observed molecular weight by Western-blot: 25-30 kDa

Validations



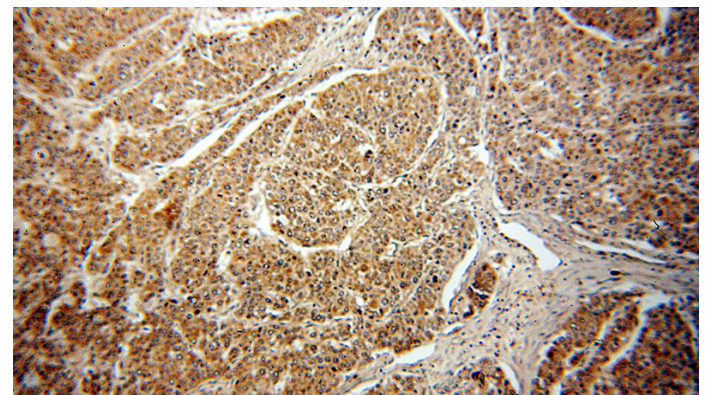
Preparation

This antibody was obtained by immunization of RAB27B recombinant protein (Accession Number: XM_005266733). Purification method: Antigen affinity purified.

rat spleen tissue were subjected to SDS PAGE followed by western blot with Catalog No:114427(RAB27B Antibody) at dilution of 1:1000

Formulation

PBS with 0.02% sodium azide and 50% glycerol pH 7.3.



Storage

Store at -20°C. DO NOT ALIQUOT

Clonality

Polyclonal

Immunohistochemical of paraffin-embedded human liver cancer using Catalog No:114427(RAB27B antibody) at dilution of 1:50 (under 10x lens)

Ig Type

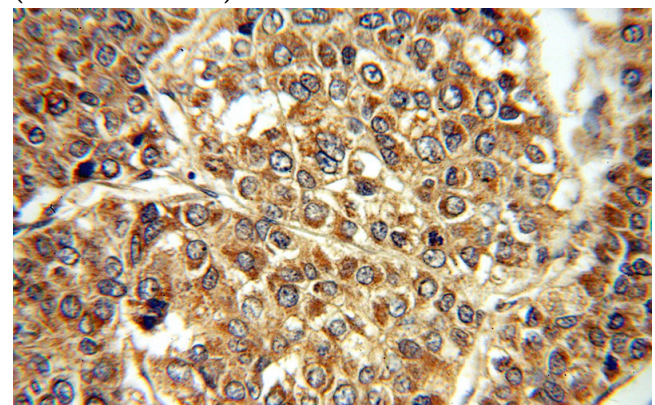
Rabbit IgG

Applications

ELISA, IHC, WB

Dilutions

Recommended Dilution:



RAB27B antibody



Catalog Number: 114427

Immunohistochemical of paraffin-embedded human liver cancer using Catalog

No:114427(RAB27B antibody) at dilution of 1:50 (under 40x lens)