

# Rab18 antibody



Catalog Number: 114415

## Product name

Rab18 antibody

Recommended Dilution:

WB: 1:200-1:2000

## Specificity

Human, Mouse, Rat; other species not tested.

IP: 1:200-1:1000

IHC: 1:20-1:200

## Antibody description

Rab18 Rabbit Polyclonal antibody. Positive IP detected in mouse testis tissue. Positive WB detected in human testis tissue, human brain tissue, human heart tissue, mouse testis tissue, PC-3 cells. Positive IHC detected in human prostate cancer tissue, human breast cancer tissue. Observed molecular weight by Western-blot: 20-23 kDa

## Preparation

This antibody was obtained by immunization of Rab18 recombinant protein (Accession Number: NM\_021252). Purification method: Antigen affinity purified.

## Formulation

PBS with 0.1% sodium azide and 50% glycerol pH 7.3.

## Storage

Store at -20°C. DO NOT ALIQUOT

## Clonality

Polyclonal

## Ig Type

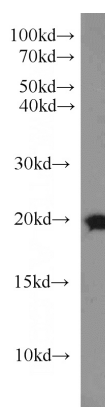
Rabbit IgG

## Applications

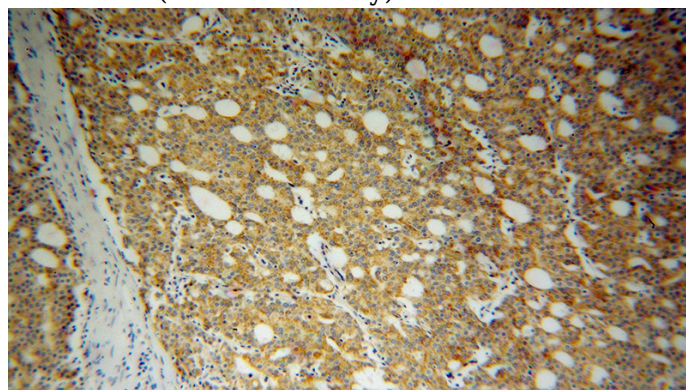
ELISA, WB, IHC, IP

## Dilutions

## Validations



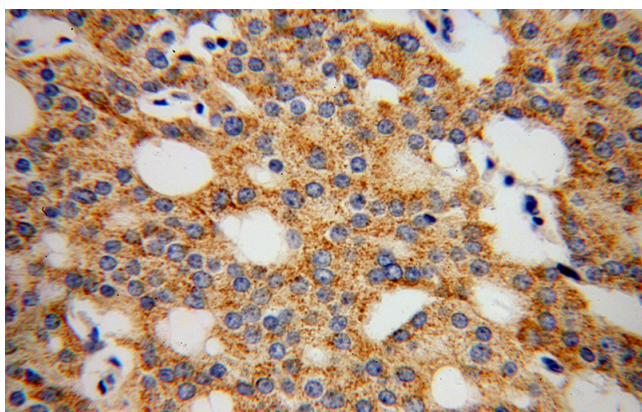
human testis tissue were subjected to SDS PAGE followed by western blot with Catalog No:114415(RAB18 antibody) at dilution of 1:800



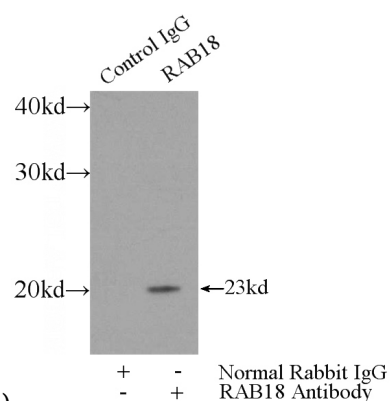
Immunohistochemical of paraffin-embedded human prostate cancer using Catalog No:114415(RAB18 antibody) at dilution of 1:100 (under 10x lens)

# Rab18 antibody

Catalog Number: 114415



Immunohistochemical of paraffin-embedded human prostate cancer using Catalog No:114415(RAB18 antibody) at dilution of 1:100



(under 40x lens)

IP Result of anti-RAB18 (IP:Catalog No:114415, 3ug; Detection:Catalog No:114415 1:300) with mouse testis tissue lysate 4000ug.