

# RAB14 antibody



Catalog Number: 114413

## Product name

RAB14 antibody

IHC: 1:20-1:200

## Specificity

Human, Mouse, Rat; other species not tested.

## Antibody description

RAB14 Rabbit Polyclonal antibody. Positive IHC detected in human liver cancer tissue. Positive WB detected in human brain tissue, human kidney tissue. Observed molecular weight by Western-blot: 24 kDa

## Preparation

This antibody was obtained by immunization of RAB14 recombinant protein (Accession Number: NM\_016322). Purification method: Antigen affinity purified.

## Formulation

PBS with 0.02% sodium azide and 50% glycerol pH 7.3.

## Storage

Store at -20°C. DO NOT ALIQUOT

## Clonality

Polyclonal

## Ig Type

Rabbit IgG

## Applications

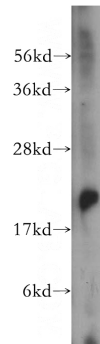
ELISA, WB, IHC

## Dilutions

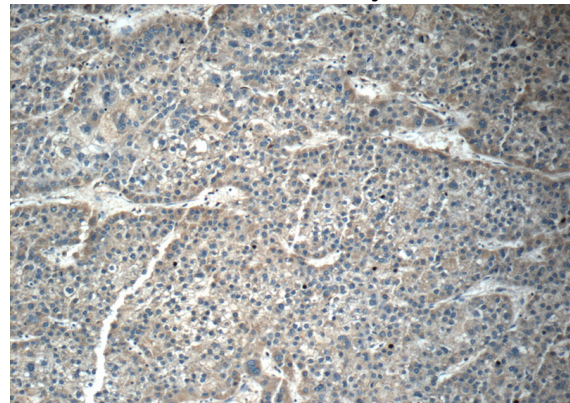
Recommended Dilution:

WB: 1:500-1:5000

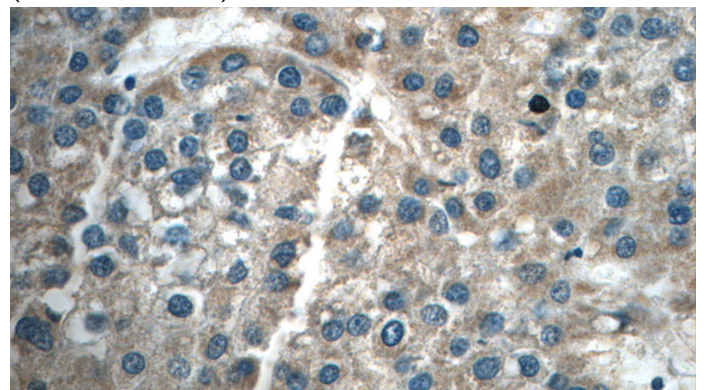
## Validations



human brain tissue were subjected to SDS PAGE followed by western blot with Catalog No:114413(RAB14 antibody) at dilution of 1:500



Immunohistochemistry of paraffin-embedded human liver cancer tissue slide using Catalog No:114413(RAB14 Antibody) at dilution of 1:50 (under 10x lens)



Immunohistochemistry of paraffin-embedded human liver cancer tissue slide using Catalog No:114413(RAB14 Antibody) at dilution of 1:50

# RAB14 antibody



Catalog Number: 114413

---

(under 40x lens)