

RAB12 antibody



Catalog Number: 114412

Product name

RAB12 antibody

IP: 1:200-1:2000

IHC: 1:20-1:200

Specificity

Human; other species not tested.

IF: 1:50-1:500

Antibody description

RAB12 Rabbit Polyclonal antibody. Positive WB detected in HeLa cells. Positive IP detected in HeLa cells. Positive IF detected in HeLa cells. Positive IHC detected in human liver tissue. Observed molecular weight by Western-blot: 28 kDa

Preparation

This antibody was obtained by immunization of Peptide (Accession Number: NM_001025300). Purification method: Antigen affinity purified.

Formulation

PBS with 0.02% sodium azide and 50% glycerol pH 7.3.

Storage

Store at -20°C. DO NOT ALIQUOT

Clonality

Polyclonal

Ig Type

Rabbit IgG

Applications

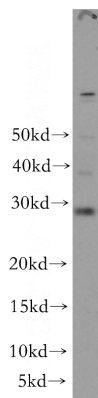
ELISA, WB, IHC, IP, IF

Dilutions

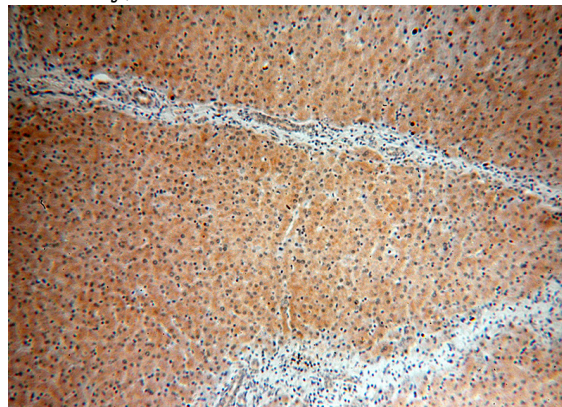
Recommended Dilution:

WB: 1:500-1:5000

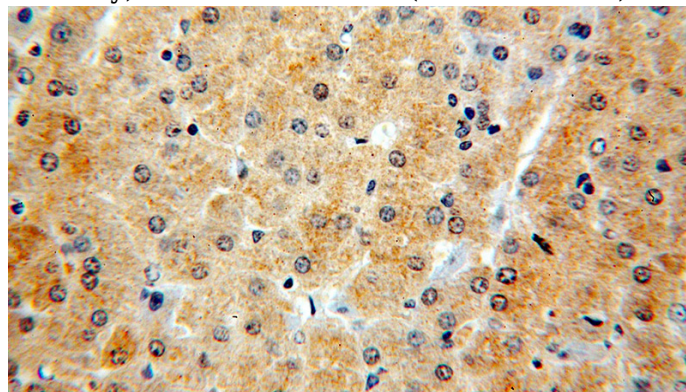
Validations



HeLa cells were subjected to SDS PAGE followed by western blot with Catalog No:114412(RAB12 antibody) at dilution of 1:500



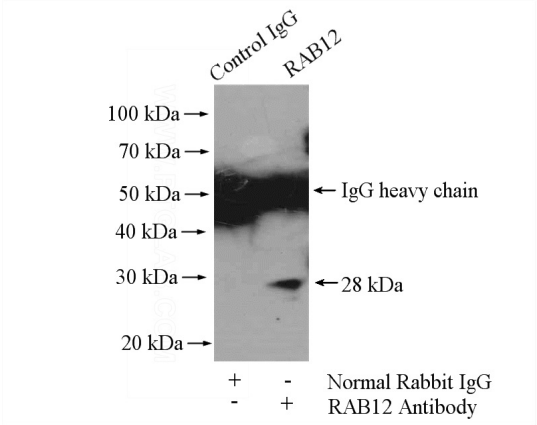
Immunohistochemical of paraffin-embedded human liver using Catalog No:114412(RAB12 antibody) at dilution of 1:100 (under 10x lens)



RAB12 antibody

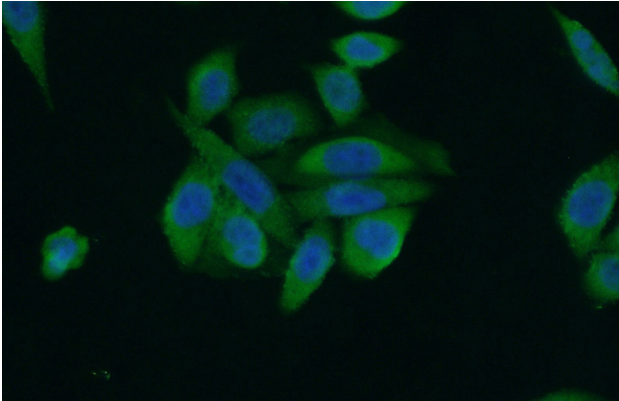
Catalog Number: 114412

Immunohistochemical of paraffin-embedded human liver using Catalog No:114412(RAB12 antibody) at dilution of 1:100 (under 40x lens)



IP Result of anti-RAB12 (IP:Catalog No:114412, 4ug; Detection:Catalog No:114412 1:500) with

HeLa cells lysate 1200ug.



Immunofluorescent analysis of (10% Formaldehyde) fixed HeLa cells using Catalog No:114412(RAB12 Antibody) at dilution of 1:50 and Alexa Fluor 488-conjugated AffiniPure Goat Anti-Rabbit IgG(H+L)