

# RAB11-Specific antibody

Catalog Number: 114411

## Product name

RAB11-Specific antibody

IP: 1:200-1:2000

IF: 1:10-1:100

## Specificity

Human, Mouse, Rat; other species not tested.

## Antibody description

RAB11-Specific Rabbit Polyclonal antibody. Positive IP detected in SH-SY5Y cells. Positive WB detected in human brain tissue, mouse colon tissue, SH-SY5Y cells. Positive IF detected in IMCD3 cells. Observed molecular weight by Western-blot: 24 kDa, 29 kDa

## Preparation

This antibody was obtained by immunization of Peptide (Accession Number: NM\_004663). Purification method: Antigen affinity purified.

## Formulation

PBS with 0.02% sodium azide and 50% glycerol pH 7.3.

## Storage

Store at -20°C. DO NOT ALIQUOT

## Clonality

Polyclonal

## Ig Type

Rabbit IgG

## Applications

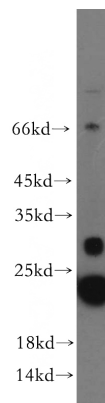
ELISA, WB, IF, IP

## Dilutions

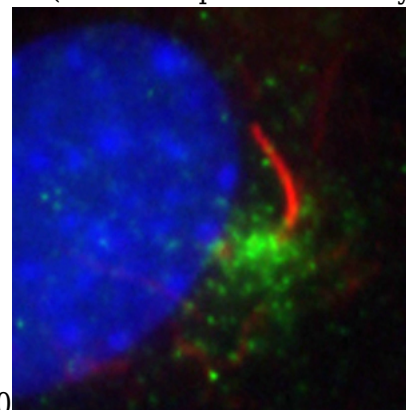
Recommended Dilution:

WB: 1:500-1:5000

## Validations

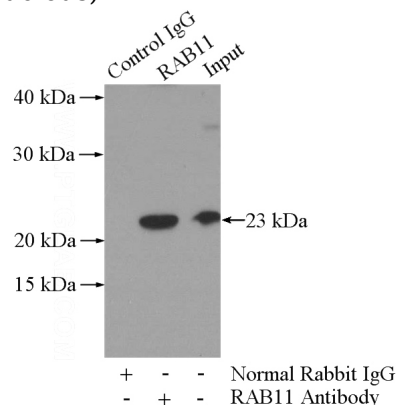


human brain tissue were subjected to SDS PAGE followed by western blot with Catalog No:114411(RAB11A-Specific antibody) at dilution



of 1:500

IF result of Catalog No:114411 (anti-RAB11A, Green) in ciliated IMCD3 cells by Dr. Seongjin Seo. (Red is the primary cilium, and blue is the nucleus)



# RAB11-Specific antibody



Catalog Number: 114411

---

IP Result of anti-RAB11A-Specific (IP:Catalog

No:114411, 3ug; Detection:Catalog No:114411  
1:700) with SH-SY5Y cells lysate 3000ug.