

# RAB11FIP2 antibody



Catalog Number: 114408

## Product name

RAB11FIP2 antibody

## Specificity

human, mouse, rat; other species not tested.

## Antibody description

RAB11FIP2 Rabbit Polyclonal antibody. Positive WB detected in mouse brain tissue, HEK-293 cells, mouse liver tissue. Positive IF detected in Hela. Observed molecular weight by Western-blot: 58kd

## Preparation

This antibody was obtained by immunization of RAB11FIP2 recombinant protein (Accession Number: NM\_014904). Purification method: Antigen affinity purified.

## Formulation

PBS with 0.02% sodium azide and 50% glycerol pH 7.3.

## Storage

Store at -20°C. DO NOT ALIQUOT

## Clonality

Polyclonal

## Ig Type

Rabbit IgG

## Applications

ELISA, WB, IF

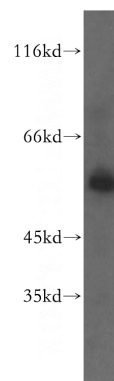
## Dilutions

Recommended Dilution:

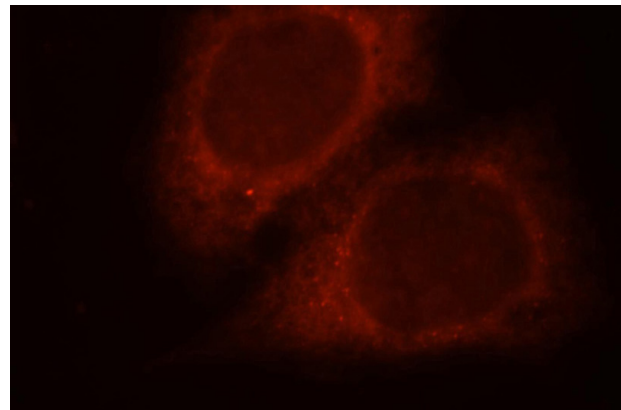
WB: 1:1000-1:10000

IF: 1:10-1:100

## Validations



mouse brain tissue were subjected to SDS PAGE followed by western blot with Catalog No:114408(RAB11FIP2 antibody) at dilution of 1:500



Immunofluorescent analysis of Hela cells, using RAB11FIP2 antibody Catalog No:114408 at 1:25 dilution and Rhodamine-labeled goat anti-rabbit IgG (red).