

# RAB11FIP1 antibody



Catalog Number: 114407

## Product name

RAB11FIP1 antibody

WB: 1:200-1:2000

IP: 1:200-1:2000

## Specificity

Human, Mouse, Rat, Monkey; other species not tested.

IHC: 1:20-1:200

IF: 1:20-1:200

## Antibody description

RAB11FIP1 Rabbit Polyclonal antibody. Positive WB detected in HepG2 cells, COS-7 cells, SKOV-3 cells. Positive IP detected in HepG2 cells. Positive IF detected in A431 cells, HeLa cells. Positive IHC detected in human breast cancer tissue. Observed molecular weight by Western-blot: 71 kDa

## Preparation

This antibody was obtained by immunization of RAB11FIP1 recombinant protein (Accession Number: NM\_025151). Purification method: Antigen affinity purified.

## Formulation

PBS with 0.1% sodium azide and 50% glycerol pH 7.3.

## Storage

Store at -20°C. DO NOT ALIQUOT

## Clonality

Polyclonal

## Ig Type

Rabbit IgG

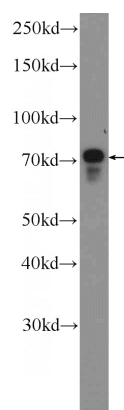
## Applications

ELISA, WB, IHC, IF, IP

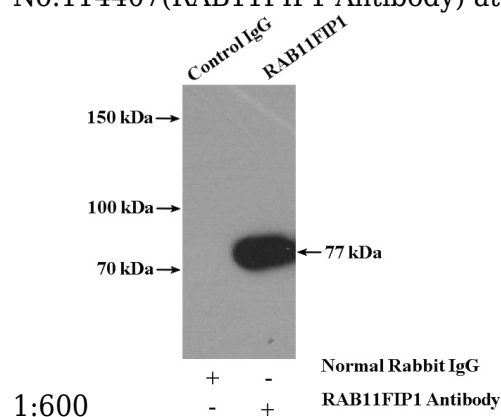
## Dilutions

Recommended Dilution:

## Validations



HepG2 cells were subjected to SDS PAGE followed by western blot with Catalog No:114407(RAB11FIP1 Antibody) at dilution of

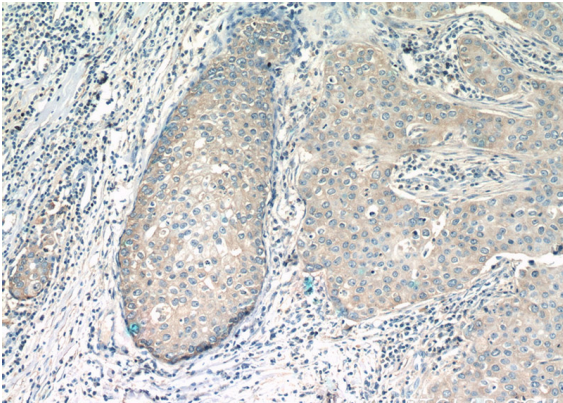


IP Result of anti-RAB11FIP1 (IP:Catalog No:114407, 4ug; Detection:Catalog No:114407 1:600) with HepG2 cells lysate 3200ug.

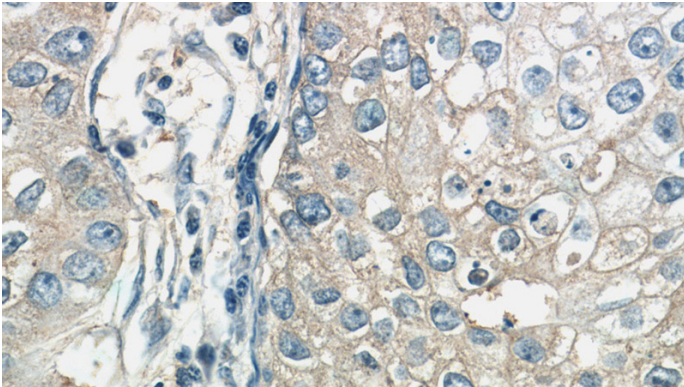
# RAB11FIP1 antibody



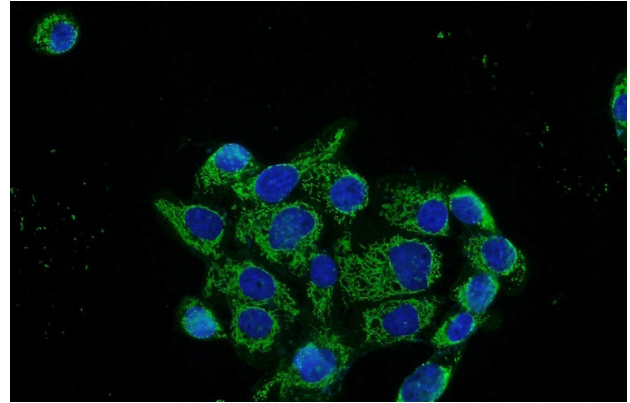
Catalog Number: 114407



Immunohistochemistry of paraffin-embedded human breast cancer tissue slide using Catalog No:114407(RAB11FIP1 Antibody) at dilution of 1:50 (under 10x lens)



Immunohistochemistry of paraffin-embedded human breast cancer tissue slide using Catalog No:114407(RAB11FIP1 Antibody) at dilution of 1:50 (under 40x lens)



Immunofluorescent analysis of A431 cells using Catalog No:114407(RAB11FIP1 Antibody) at dilution of 1:50 and Alexa Fluor 488-conjugated AffiniPure Goat Anti-Rabbit IgG(H+L)