

# PSMD12 antibody

Catalog Number: 114395

## Product name

PSMD12 antibody

IHC: 1:20-1:200

IF: 1:10-1:100

## Specificity

Human, Mouse, Rat; other species not tested.

## Antibody description

PSMD12 Rabbit Polyclonal antibody. Positive IHC detected in human pancreas cancer tissue. Positive IF detected in HepG2 cells. Positive WB detected in HepG2 cells. Observed molecular weight by Western-blot: 55 kDa

## Preparation

This antibody was obtained by immunization of PSMD12 recombinant protein (Accession Number: NM\_002816). Purification method: Antigen affinity purified.

## Formulation

PBS with 0.02% sodium azide and 50% glycerol pH 7.3.

## Storage

Store at -20°C. DO NOT ALIQUOT

## Clonality

Polyclonal

## Ig Type

Rabbit IgG

## Applications

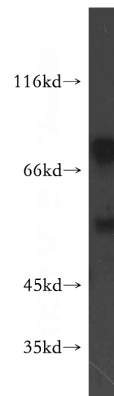
ELISA, WB, IHC, IF

## Dilutions

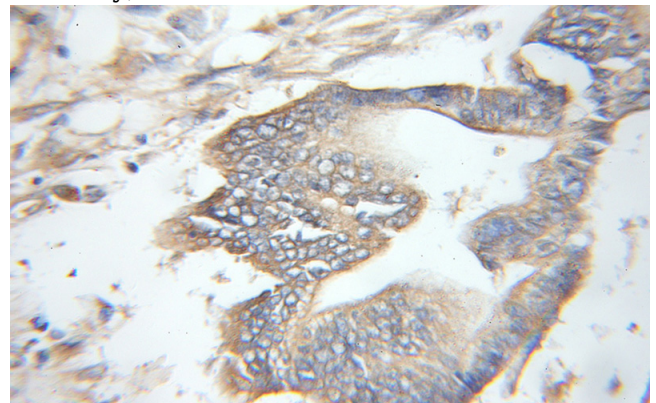
Recommended Dilution:

WB: 1:200-1:1000

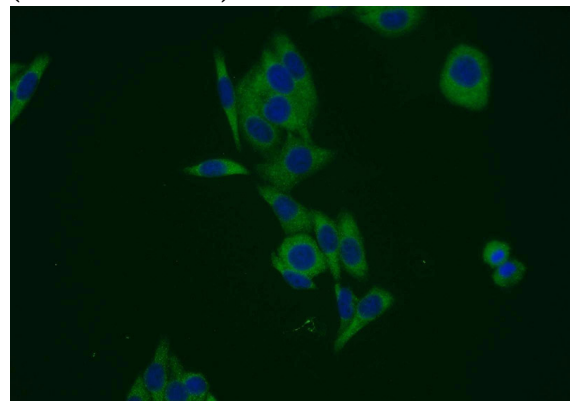
## Validations



HepG2 cells were subjected to SDS PAGE followed by western blot with Catalog No:114395(PSMD12 antibody) at dilution of 1:100



Immunohistochemical of paraffin-embedded human pancreas cancer using Catalog No:114395(PSMD12 antibody) at dilution of 1:50 (under 10x lens)



Immunofluorescent analysis of HepG2 cells using

# PSMD12 antibody



Catalog Number: 114395

---

Catalog No:114395(PSMD12 Antibody) at dilution of 1:25 and Alexa Fluor 488-conjugated AffiniPure Goat Anti-Rabbit IgG(H+L)