

# PSMD11 antibody



Catalog Number: 114394

## Product name

PSMD11 antibody

IP: 1:200-1:2000

IF: 1:10-1:100

## Specificity

Human, Mouse, Rat; other species not tested.

## Antibody description

PSMD11 Rabbit Polyclonal antibody. Positive WB detected in HeLa cells, A549 cells, MCF7 cells, mouse testis tissue, rat brain tissue. Positive IP detected in MCF-7 cells. Positive IF detected in MCF-7 cells. Observed molecular weight by Western-blot: 47 kDa

## Preparation

This antibody was obtained by immunization of PSMD11 recombinant protein (Accession Number: NM\_002815). Purification method: Antigen affinity purified.

## Formulation

PBS with 0.02% sodium azide and 50% glycerol pH 7.3.

## Storage

Store at -20°C. DO NOT ALIQUOT

## Clonality

Polyclonal

## Ig Type

Rabbit IgG

## Applications

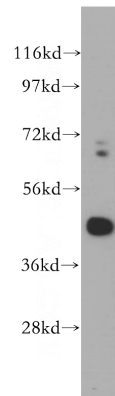
ELISA, WB, IP, IF

## Dilutions

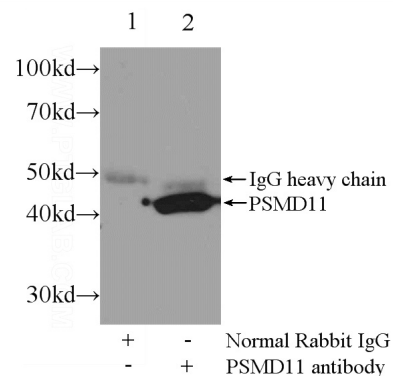
Recommended Dilution:

WB: 1:1000-1:10000

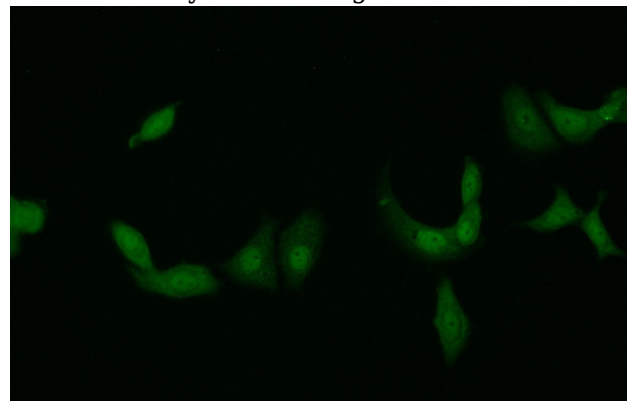
## Validations



HeLa cells were subjected to SDS PAGE followed by western blot with Catalog No:114394(PSMD11 antibody) at dilution of 1:500



IP Result of anti-PSMD11 (IP:Catalog No:114394, 3ug; Detection:Catalog No:114394 1:500) with MCF-7 cells lysate 2000ug.



Immunofluorescent analysis of MCF-7 cells using Catalog No:114394(PSMD11 Antibody) at dilution

# PSMD11 antibody



Catalog Number: 114394

---

of 1:25 and Alexa Fluor 488-conjugated AffiniPure Goat Anti-Rabbit IgG(H+L)