

# PSMC4 antibody



Catalog Number: 114391

## Product name

PSMC4 antibody

IHC: 1:20-1:200

IF: 1:10-1:100

## Specificity

Human, Mouse, Rat; other species not tested.

## Antibody description

PSMC4 Rabbit Polyclonal antibody. Positive WB detected in human skeletal muscle tissue, human brain tissue. Positive IF detected in HepG2 cells. Positive IHC detected in human colon cancer tissue. Observed molecular weight by Western-blot: 47 kDa

## Preparation

This antibody was obtained by immunization of PSMC4 recombinant protein (Accession Number: NM\_006503). Purification method: Antigen affinity purified.

## Formulation

PBS with 0.1% sodium azide and 50% glycerol pH 7.3.

## Storage

Store at -20°C. DO NOT ALIQUOT

## Clonality

Polyclonal

## Ig Type

Rabbit IgG

## Applications

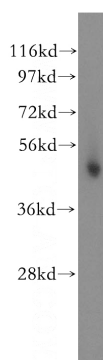
ELISA, WB, IHC, IF

## Dilutions

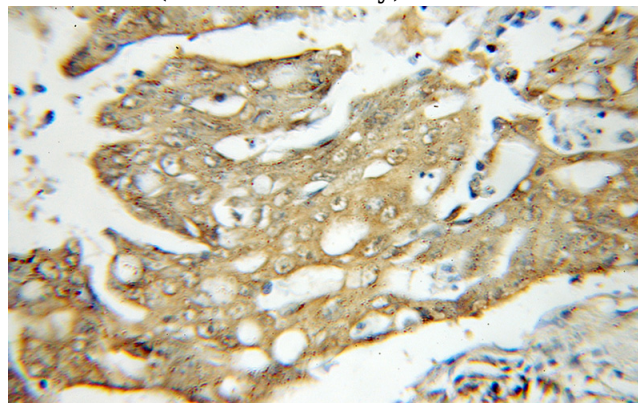
Recommended Dilution:

WB: 1:500-1:5000

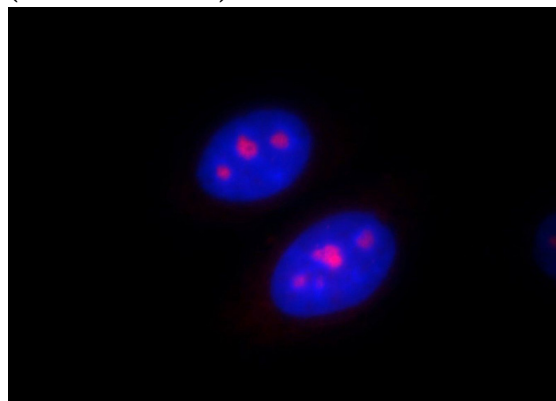
## Validations



human skeletal muscle tissue were subjected to SDS PAGE followed by western blot with Catalog No:114391(PSMC4 antibody) at dilution of 1:500



Immunohistochemical of paraffin-embedded human colon cancer using Catalog No:114391(PSMC4 antibody) at dilution of 1:50 (under 10x lens)



Immunofluorescent analysis of HepG2 cells, using

# PSMC4 antibody



Catalog Number: 114391

---

PSMC4 antibody Catalog No:114391 at 1:25  
dilution and Rhodamine-labeled goat anti-rabbit

IgG (red). Blue pseudocolor = DAPI (fluorescent  
DNA dye).