

PSMB6 antibody

Catalog Number: 114386

Product name

PSMB6 antibody

Specificity

Human, Mouse, Rat; other species not tested.

Antibody description

PSMB6 Rabbit Polyclonal antibody. Positive IHC detected in human colon cancer tissue, human gliomas tissue. Positive WB detected in human brain tissue, HeLa cells, human liver tissue. Observed molecular weight by Western-blot: 25kd

Preparation

This antibody was obtained by immunization of PSMB6 recombinant protein (Accession Number: NM_002798). Purification method: Antigen affinity purified.

Formulation

PBS with 0.1% sodium azide and 50% glycerol pH 7.3.

Storage

Store at -20°C. DO NOT ALIQUOT

Clonality

Polyclonal

Ig Type

Rabbit IgG

Applications

ELISA, WB, IHC

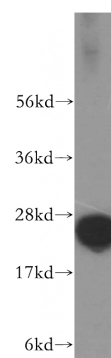
Dilutions

Recommended Dilution:

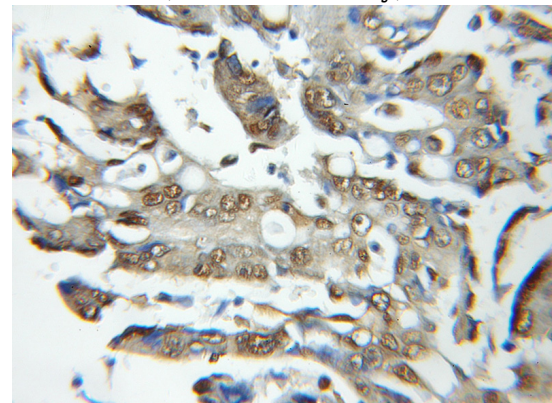
WB: 1:500-1:5000

IHC: 1:20-1:200

Validations



human brain tissue were subjected to SDS PAGE followed by western blot with Catalog No:114386(PSMB6 antibody) at dilution of 1:500



Immunohistochemical of paraffin-embedded human colon cancer using Catalog No:114386(PSMB6 antibody) at dilution of 1:50 (under 40x lens)