

# PSMB5 antibody

Catalog Number: 114385

## Product name

PSMB5 antibody

IHC: 1:20-1:200

IF: 1:20-1:200

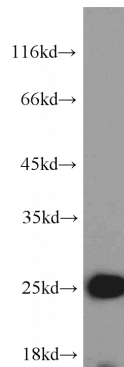
## Specificity

Human, Mouse, Rat; other species not tested.

## Antibody description

PSMB5 Rabbit Polyclonal antibody. Positive IF detected in HepG2 cells. Positive IHC detected in human breast cancer tissue, human hepat°Cirrhosis tissue. Positive WB detected in L02 cells, HeLa cells, Jurkat cells. Observed molecular weight by Western-blot: 22kd

## Validations



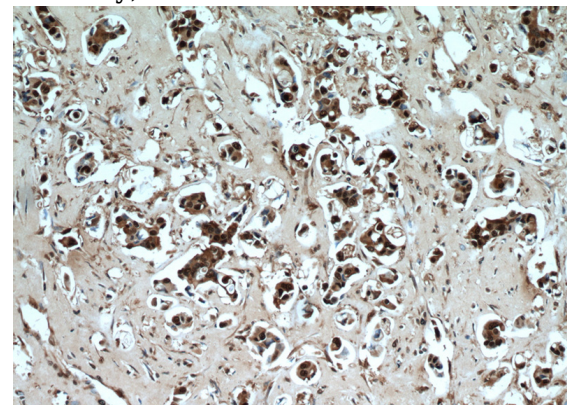
## Preparation

This antibody was obtained by immunization of PSMB5 recombinant protein (Accession Number: NM\_002797). Purification method: Antigen affinity purified.

L02 cells were subjected to SDS PAGE followed by western blot with Catalog No:114385(PSMB5 antibody) at dilution of 1:1000

## Formulation

PBS with 0.02% sodium azide and 50% glycerol pH 7.3.



## Storage

Store at -20°C. DO NOT ALIQUOT

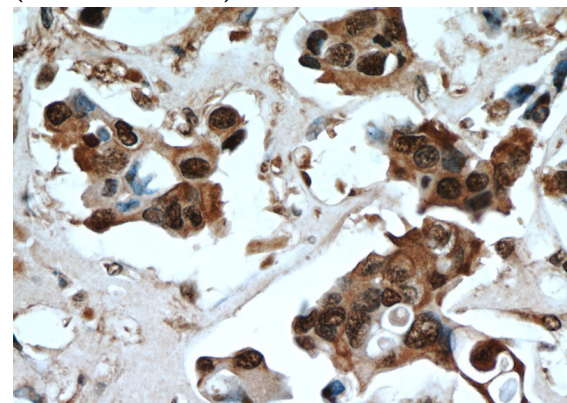
## Clonality

Polyclonal

Immunohistochemical of paraffin-embedded human breast cancer using Catalog No:114385(PSMB5 antibody) at dilution of 1:500 (under 10x lens)

## Ig Type

Rabbit IgG



## Applications

ELISA, WB, IHC, IF

## Dilutions

Recommended Dilution:

WB: 1:500-1:5000

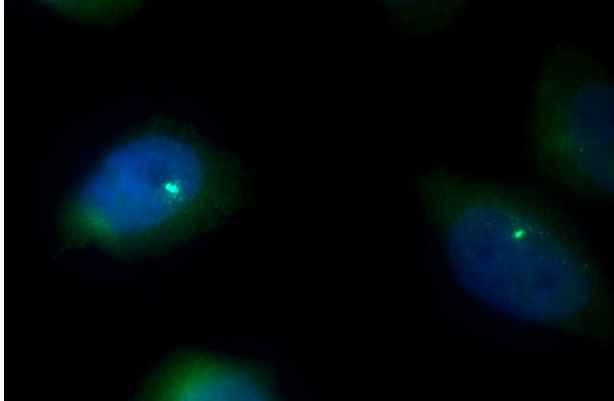
Immunohistochemical of paraffin-embedded

# PSMB5 antibody

Catalog Number: 114385

---

human breast cancer using Catalog No:114385(PSMB5 antibody) at dilution of 1:50 (under 40x lens)



Immunofluorescent analysis of HepG2 cells using Catalog No:114385(PSMB5 Antibody) at dilution of 1:50 and Alexa Fluor 488-conjugated AffiniPure Goat Anti-Rabbit IgG(H+L)