

PSMB4 antibody



Catalog Number: 114384

Product name

PSMB4 antibody

Specificity

Human; other species not tested.

Antibody description

PSMB4 Rabbit Polyclonal antibody. Positive IF detected in MCF-7 cells, HepG2 cells. Positive IHC detected in human breast cancer tissue. Positive WB detected in HEK-293 cells, HeLa cells, human placenta tissue, human skeletal muscle tissue, MCF-7 cells, mouse skeletal muscle tissue. Observed molecular weight by Western-blot: 25 kDa

Preparation

This antibody was obtained by immunization of PSMB4 recombinant protein (Accession Number: BC010088). Purification method: Antigen affinity purified.

Formulation

PBS with 0.1% sodium azide and 50% glycerol pH 7.3.

Storage

Store at -20°C. DO NOT ALIQUOT

Clonality

Polyclonal

Ig Type

Rabbit IgG

Applications

ELISA, IHC, IF, WB

Dilutions

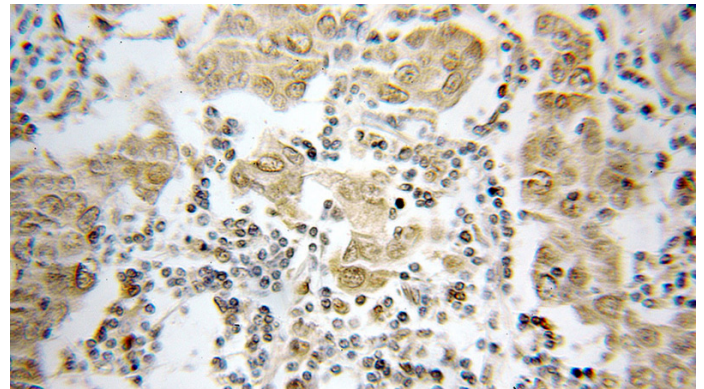
Recommended Dilution:

WB: 1:200-1:2000

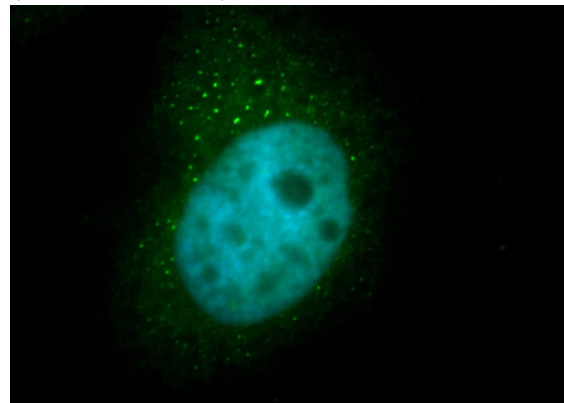
IHC: 1:20-1:200

IF: 1:20-1:200

Validations



Immunohistochemical of paraffin-embedded human breast cancer using Catalog No:114384(PSMB4 antibody) at dilution of 1:50 (under 10x lens)



Immunofluorescent analysis of MCF-7 cells, using PSMB4 antibody Catalog No:114384 at 1:50 dilution and FITC-labeled donkey anti-rabbit IgG(green). Blue pseudocolor = DAPI (fluorescent

PSMB4 antibody



Catalog Number: 114384

HEK-293 cells were subjected to SDS PAGE followed by western blot with Catalog No:114384(PSMB4 Antibody) at dilution of 1:600

