

PSMA8 antibody



Catalog Number: 114378

Product name

PSMA8 antibody

WB: 1:500-1:5000

IHC: 1:20-1:200

Specificity

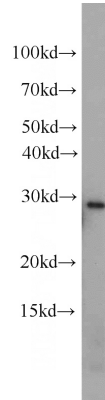
Human, Mouse, Rat; other species not tested.

IF: 1:10-1:100

Antibody description

PSMA8 Rabbit Polyclonal antibody. Positive FC detected in HepG2 cells. Positive IF detected in HepG2 cells. Positive IHC detected in human testis tissue. Positive WB detected in K-562 cells, Jurkat cells, mouse thymus tissue, RAW264.7 cells. Observed molecular weight by Western-blot: 28kd

Validations



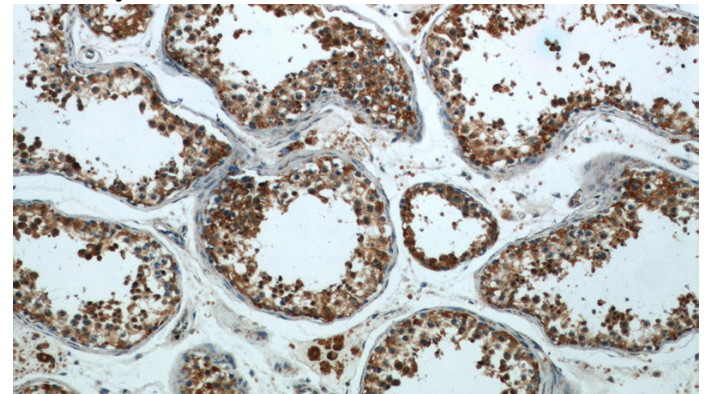
Preparation

This antibody was obtained by immunization of PSMA8 recombinant protein (Accession Number: NM_001025096). Purification method: Antigen affinity purified.

K-562 cells were subjected to SDS PAGE followed by western blot with Catalog No:114378(PSMA8 antibody) at dilution of 1:500

Formulation

PBS with 0.1% sodium azide and 50% glycerol pH 7.3.



Storage

Store at -20°C. DO NOT ALIQUOT

Clonality

Polyclonal

Immunohistochemical of paraffin-embedded human testis using Catalog No:114378(PSMA8 antibody) at dilution of 1:50 (under 10x lens)

Ig Type

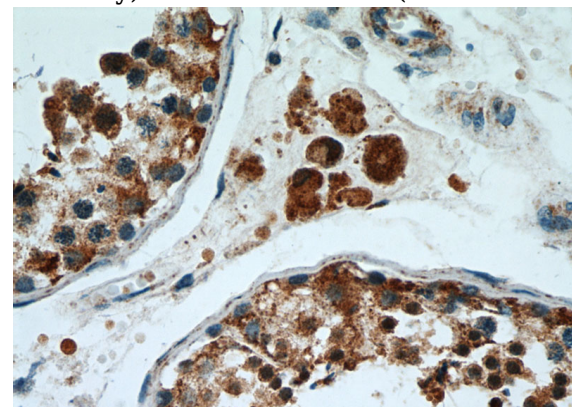
Rabbit IgG

Applications

ELISA, WB, IHC, IF, FC

Dilutions

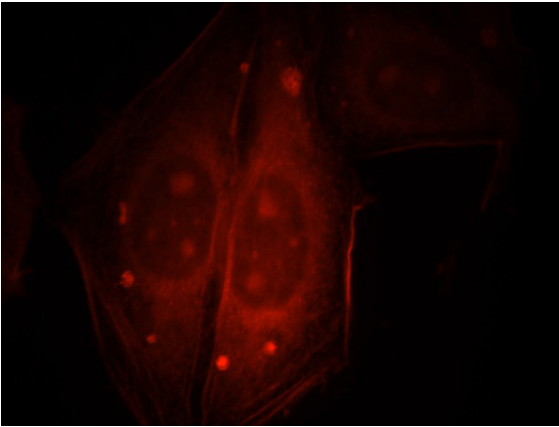
Recommended Dilution:



PSMA8 antibody

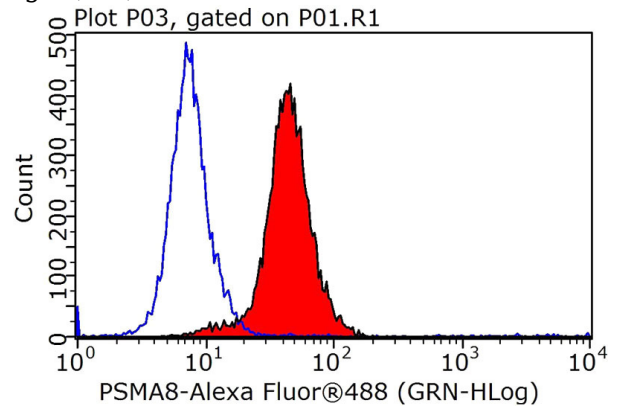
Catalog Number: 114378

Immunohistochemical of paraffin-embedded human testis using Catalog No:114378(PSMA8 antibody) at dilution of 1:50 (under 40x lens)



Immunofluorescent analysis of HepG2 cells, using PSMA8 antibody Catalog No:114378 at 1:25 dilution and Rhodamine-labeled goat anti-rabbit

IgG (red).



1X10⁶ HepG2 cells were stained with .2ug PSMA8 antibody (Catalog No:114378, red) and control antibody (blue). Fixed with 90% MeOH blocked with 3% BSA (30 min). Alexa Fluor 488-conjugated AffiniPure Goat Anti-Rabbit IgG(H+L) with dilution 1:1000.