

# PSMA6 antibody

Catalog Number: 114376

## Product name

PSMA6 antibody

## Immunogen

[Human PSMA6 Recombinant protein \(GST tag\)](#)

## Specificity

Human, Mouse, Rat; other species not tested.

## Antibody description

PSMA6 Rabbit Polyclonal antibody. Positive WB detected in MCF7 cells, A375 cells, A549 cells, HEK-293 cells, HepG2 cells, human brain tissue, human skeletal muscle tissue, Jurkat cells, Neuro-2a cells. Positive IP detected in HEK-293 cells. Positive IHC detected in human lung cancer tissue, human testis tissue. Positive IF detected in HeLa cells, A375 cells, HepG2 cells, MCF-7 cells. Observed molecular weight by Western-blot: 27-29 kDa

## Preparation

This antibody was obtained by immunization of PSMA6 recombinant protein (Accession Number: NM\_002791). Purification method: Antigen affinity purified.

## Formulation

PBS with 0.1% sodium azide and 50% glycerol pH 7.3.

## Storage

Store at -20°C. DO NOT ALIQUOT

## Clonality

Polyclonal

## Ig Type

Rabbit IgG

## Applications

ELISA, IHC, IF, WB, IP

## Dilutions

Recommended Dilution:

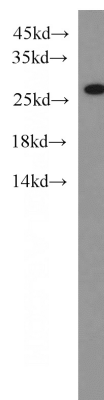
WB: 1:500-1:5000

IP: 1:500-1:5000

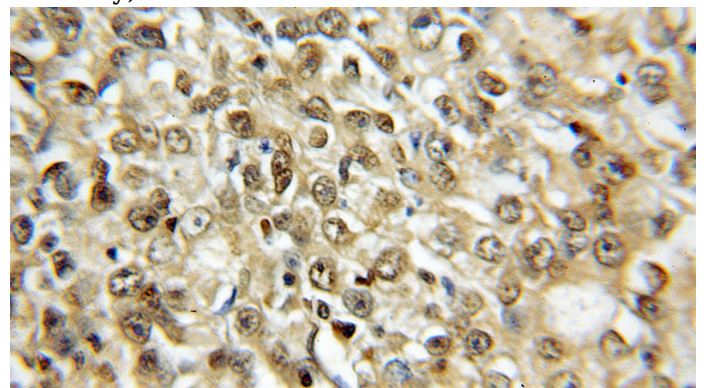
IHC: 1:20-1:200

IF: 1:20-1:200

## Validations



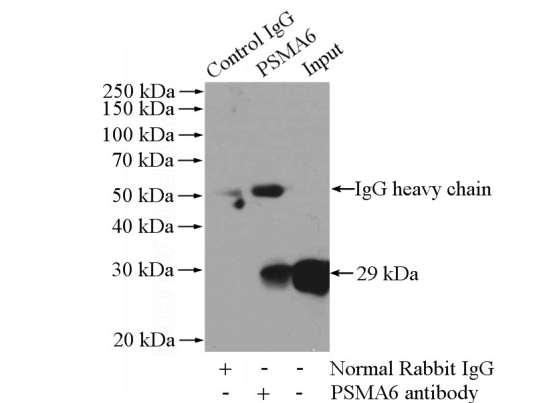
MCF7 cells were subjected to SDS PAGE followed by western blot with Catalog No:114376(PSMA6 antibody) at dilution of 1:1000




Immunohistochemical of paraffin-embedded human lung cancer using Catalog No:114376(PSMA6 antibody) at dilution of 1:50 (under 10x lens)

# PSMA6 antibody

Catalog Number: 114376



IP Result of anti-PSMA6 (IP:Catalog No:114376, 4ug; Detection:Catalog No:114376 1:1000) with HEK-293 cells lysate 3200ug. 

Immunofluorescent analysis of HeLa cells using Catalog No:114376(PSMA6 Antibody) at dilution of 1:50 and Alexa Fluor 488-conjugated AffiniPure Goat Anti-Rabbit IgG(H+L)