

# PSMA2 antibody



Catalog Number: 114373

## Product name

PSMA2 antibody

## Specificity

Human, Mouse, Rat; other species not tested.

## Antibody description

PSMA2 Rabbit Polyclonal antibody. Positive IF detected in HepG2 cells. Positive WB detected in NIH/3T3 cells, HEK-293 cells, HepG2 cells, mouse kidney tissue, PC-3 cells. Observed molecular weight by Western-blot: 26 kDa

## Preparation

This antibody was obtained by immunization of PSMA2 recombinant protein (Accession Number: NM\_002787). Purification method: Antigen affinity purified.

## Formulation

PBS with 0.1% sodium azide and 50% glycerol pH 7.3.

## Storage

Store at -20°C. DO NOT ALIQUOT

## Clonality

Polyclonal

## Ig Type

Rabbit IgG

## Applications

ELISA, WB, IF

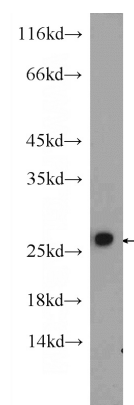
## Dilutions

Recommended Dilution:

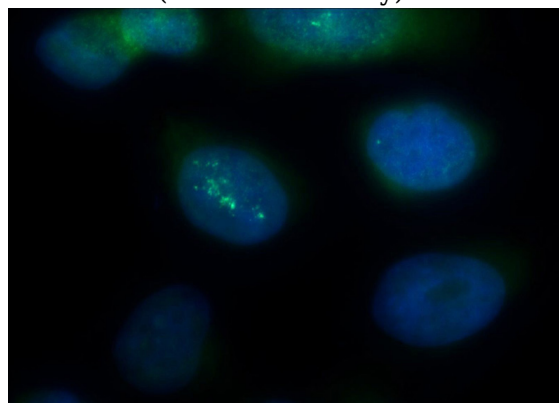
WB: 1:200-1:2000

IF: 1:20-1:200

## Validations



NIH/3T3 cells were subjected to SDS PAGE followed by western blot with Catalog No:114373(PSMA2 Antibody) at dilution of 1:600



Immunofluorescent analysis of HepG2 cells using Catalog No:114373(PSMA2 Antibody) at dilution of 1:50 and Alexa Fluor 488-conjugated AffiniPure Goat Anti-Rabbit IgG(H+L)