

# PSMA1 antibody

Catalog Number: 114372

## Product name

PSMA1 antibody

IHC: 1:20-1:200

IF: 1:10-1:100

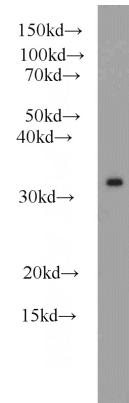
## Specificity

Human, Mouse, Rat; other species not tested.

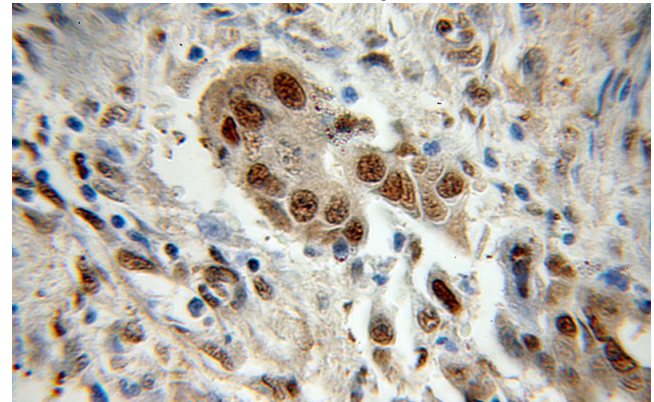
## Antibody description

PSMA1 Rabbit Polyclonal antibody. Positive WB detected in COLO 320 cells, HeLa cells, mouse kidney tissue, PC-3 cells. Positive IF detected in PC-3 cells. Positive IHC detected in human colon cancer tissue. Observed molecular weight by Western-blot: 29-33 kDa

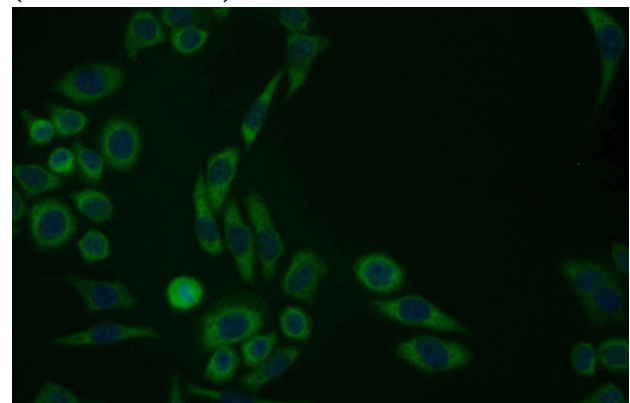
## Validations



COLO 320 cells were subjected to SDS PAGE followed by western blot with Catalog No:114372(PSMA1 antibody) at dilution of 1:600



Immunohistochemical of paraffin-embedded human colon cancer using Catalog No:114372(PSMA1 antibody) at dilution of 1:50 (under 10x lens)



Immunofluorescent analysis of PC-3 cells using

## Preparation

This antibody was obtained by immunization of PSMA1 recombinant protein (Accession Number: NM\_002786). Purification method: Antigen affinity purified.

## Formulation

PBS with 0.1% sodium azide and 50% glycerol pH 7.3.

## Storage

Store at -20°C. DO NOT ALIQUOT

## Clonality

Polyclonal

## Ig Type

Rabbit IgG

## Applications

ELISA, WB, IHC, IF

## Dilutions

Recommended Dilution:

WB: 1:200-1:2000

# PSMA1 antibody



Catalog Number: 114372

---

Catalog No:114372(PSMA1 Antibody) at dilution of 1:25 and Alexa Fluor 488-conjugated AffiniPure Goat Anti-Rabbit IgG(H+L)