

PSKH2 antibody



Catalog Number: 114370

Product name

PSKH2 antibody

IP: 1:200-1:2000

IHC: 1:20-1:200

Specificity

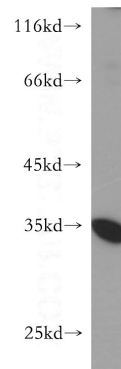
Human; other species not tested.

IF: 1:20-1:200

Antibody description

PSKH2 Rabbit Polyclonal antibody. Positive IP detected in HepG2 cells. Positive WB detected in HepG2 cells, human brain tissue, human heart tissue, human testis tissue. Positive IHC detected in human kidney tissue. Positive IF detected in HepG2 cells. Observed molecular weight by Western-blot: 35 kDa

Validations



Preparation

This antibody was obtained by immunization of Peptide (Accession Number: NM_033126). Purification method: Antigen affinity purified.

HepG2 cells were subjected to SDS PAGE followed by western blot with Catalog No:114370(PSKH2 antibody) at dilution of 1:600

Formulation

PBS with 0.02% sodium azide and 50% glycerol pH 7.3.

Storage

Store at -20°C. DO NOT ALIQUOT

Clonality

Polyclonal

Ig Type

Rabbit IgG

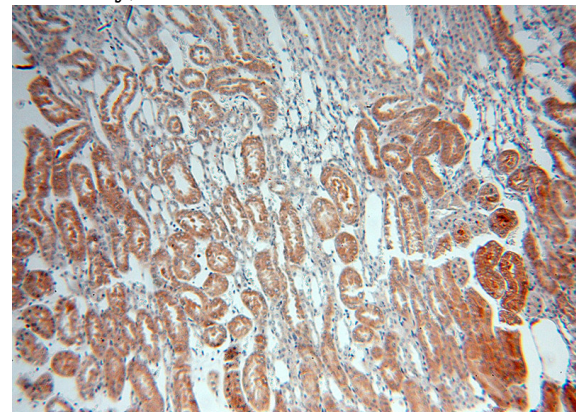
Applications

ELISA, WB, IHC, IF, IP

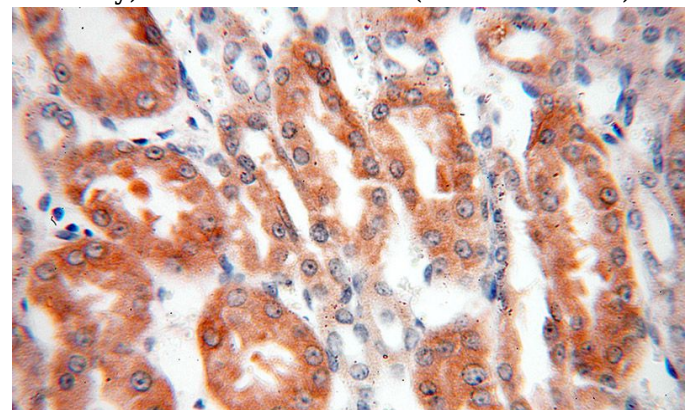
Dilutions

Recommended Dilution:

WB: 1:1000-1:10000




Immunohistochemical of paraffin-embedded human kidney using Catalog No:114370(PSKH2 antibody) at dilution of 1:100 (under 10x lens)



PSKH2 antibody

Catalog Number: 114370

Immunohistochemical of paraffin-embedded human kidney using Catalog No:114370(PSKH2 antibody) at dilution of 1:100 (under 40x lens)

IP Result of anti-PSKH2 (IP:Catalog No:114370, 4ug; Detection:Catalog No:114370 1:500) with HepG2 cells lysate 3400ug. 

Immunofluorescent analysis of (10% Formaldehyde) fixed HepG2 cells using Catalog No:114370(PSKH2 Antibody) at dilution of 1:50 and Alexa Fluor 488-conjugated AffiniPure Goat Anti-Rabbit IgG(H+L)

