

PSG4 antibody



Catalog Number: 114368

Product name

PSG4 antibody

Specificity

Human; other species not tested.

Antibody description

PSG4 Rabbit Polyclonal antibody. Positive WB detected in Transfected HEK-293 cells. Positive IHC detected in human placenta tissue.

Preparation

This antibody was obtained by immunization of PSG4 recombinant protein (Accession Number: NM_001184825). Purification method: Antigen affinity purified.

Formulation

PBS with 0.1% sodium azide and 50% glycerol pH 7.3.

Storage

Store at -20°C. DO NOT ALIQUOT

Clonality

Polyclonal

Ig Type

Rabbit IgG

Applications

ELISA, IHC, WB

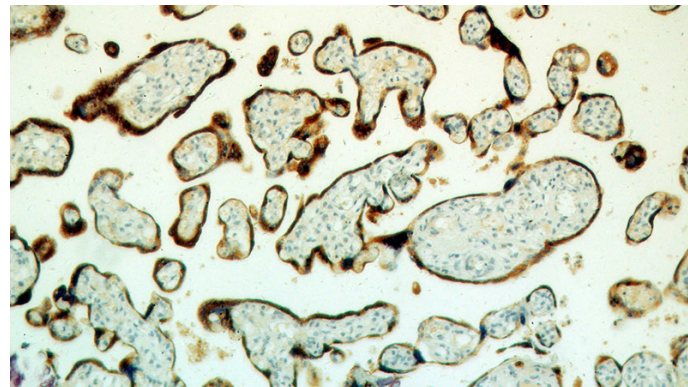
Dilutions

Recommended Dilution:

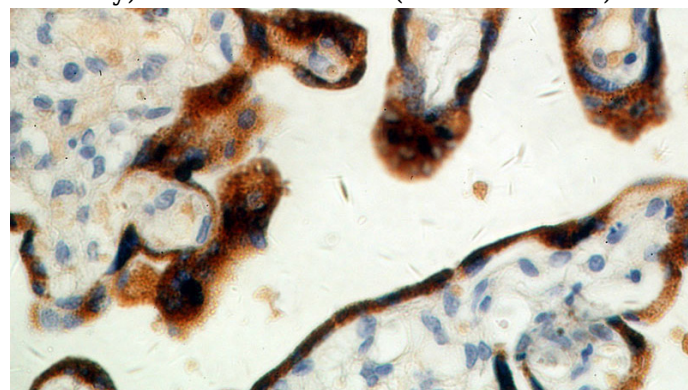
WB: 1:200-1:2000

IHC: 1:20-1:200

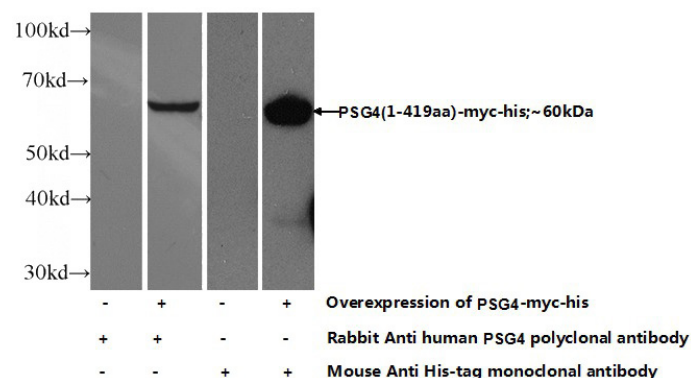
Validations



Immunohistochemical of paraffin-embedded human placenta using Catalog No:114368(PSG4 antibody) at dilution of 1:50 (under 10x lens)



Immunohistochemical of paraffin-embedded human placenta using Catalog No:114368(PSG4 antibody) at dilution of 1:50 (under 40x lens)



Transfected HEK-293 cells were subjected to SDS PAGE followed by western blot with Catalog No:114368(PSG4 Antibody) at dilution of 1:700