

# QDPR antibody



Catalog Number: 114366

## Product name

QDPR antibody

IP: 1:500-1:5000

IHC: 1:20-1:200

## Specificity

Human, Mouse, Rat; other species not tested.

## Antibody description

QDPR Rabbit Polyclonal antibody. Positive IHC detected in human ovary tumor tissue. Positive IP detected in mouse liver tissue. Positive WB detected in mouse liver tissue, human liver tissue. Observed molecular weight by Western-blot: 28-30 kDa

## Preparation

This antibody was obtained by immunization of QDPR recombinant protein (Accession Number: NM\_000320). Purification method: Antigen affinity purified.

## Formulation

PBS with 0.02% sodium azide and 50% glycerol pH 7.3.

## Storage

Store at -20°C. DO NOT ALIQUOT

## Clonality

Polyclonal

## Ig Type

Rabbit IgG

## Applications

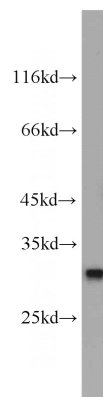
ELISA, WB, IHC, IP

## Dilutions

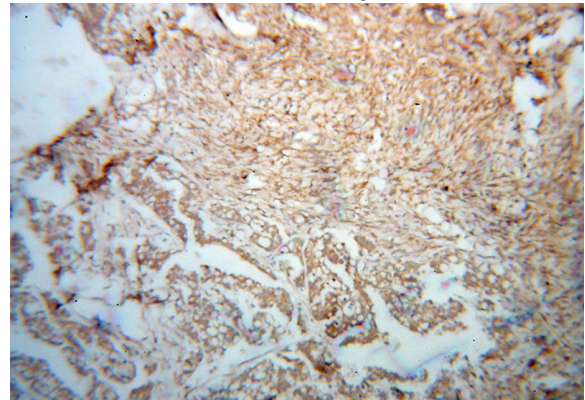
Recommended Dilution:

WB: 1:500-1:5000

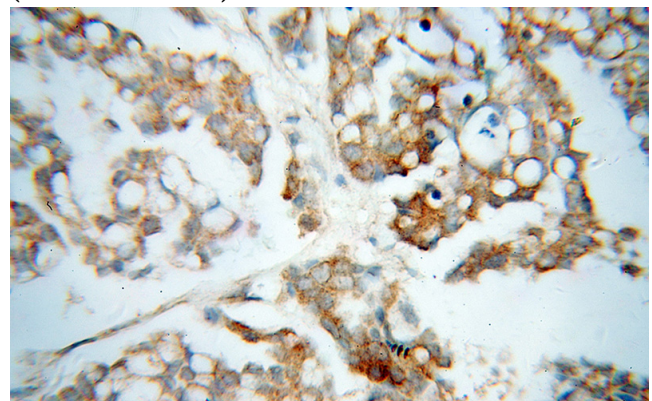
## Validations



mouse liver tissue were subjected to SDS PAGE followed by western blot with Catalog No:114366(QDPR antibody) at dilution of 1:1000



Immunohistochemical of paraffin-embedded human ovary tumor using Catalog No:114366(QDPR antibody) at dilution of 1:100 (under 10x lens)



Immunohistochemical of paraffin-embedded

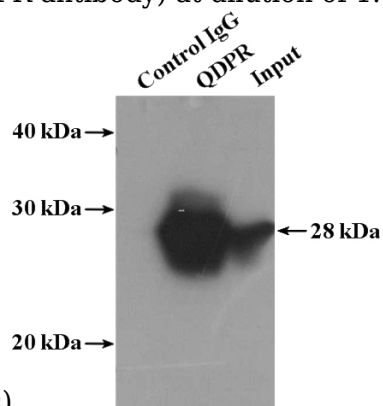
# QDPR antibody

Catalog Number: 114366

---

human ovary tumor using Catalog  
No:114366(QDPR antibody) at dilution of 1:100

IP Result of anti-QDPR (IP:Catalog No:114366,  
4ug; Detection:Catalog No:114366 1:1000) with  
mouse liver tissue lysate 4000ug.



(under 40x lens)