

Pyruvate Carboxylase antibody



Catalog Number: 114365

Product name

Pyruvate Carboxylase antibody

IP: 1:200-1:2000

IHC: 1:20-1:200

Specificity

Human, Mouse, Rat; other species not tested.

IF: 1:10-1:100

Antibody description

Pyruvate Carboxylase Rabbit Polyclonal antibody. Positive WB detected in HepG2 cells. Positive IP detected in mouse liver tissue. Positive IHC detected in human liver tissue. Positive IF detected in HepG2 cells. Observed molecular weight by Western-blot: 125-130kd

Preparation

This antibody was obtained by immunization of Pyruvate Carboxylase recombinant protein (Accession Number: XM_017017870). Purification method: Antigen affinity purified.

Formulation

PBS with 0.02% sodium azide and 50% glycerol pH 7.3.

Storage

Store at -20°C. DO NOT ALIQUOT

Clonality

Polyclonal

Ig Type

Rabbit IgG

Applications

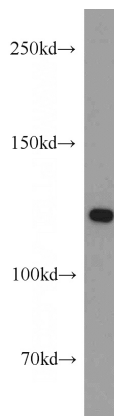
ELISA, WB, IHC, IF, IP

Dilutions

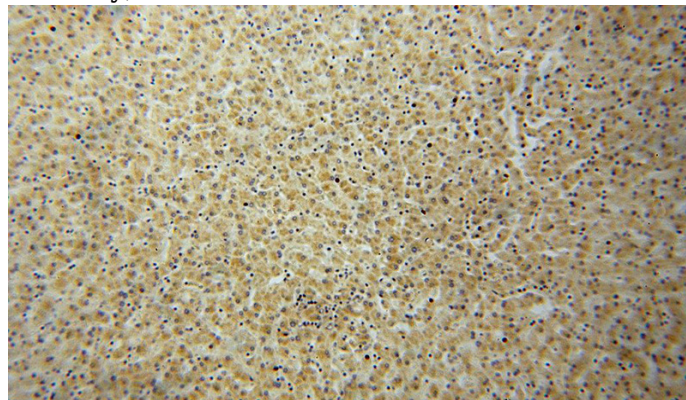
Recommended Dilution:

WB: 1:500-1:5000

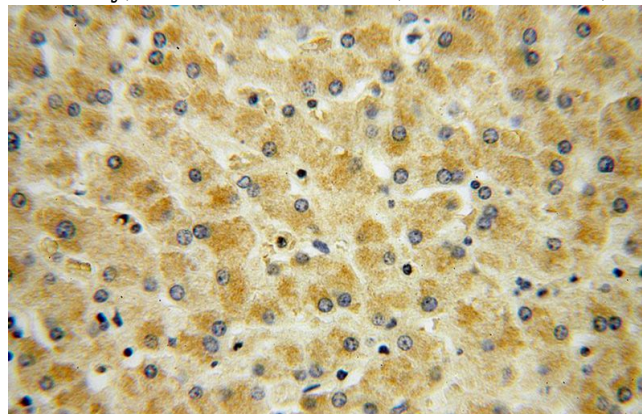
Validations



HepG2 cells were subjected to SDS PAGE followed by western blot with Catalog No:114365(PC antibody) at dilution of 1:1000



Immunohistochemical of paraffin-embedded human liver using Catalog No:114365(PC antibody) at dilution of 1:50 (under 10x lens)

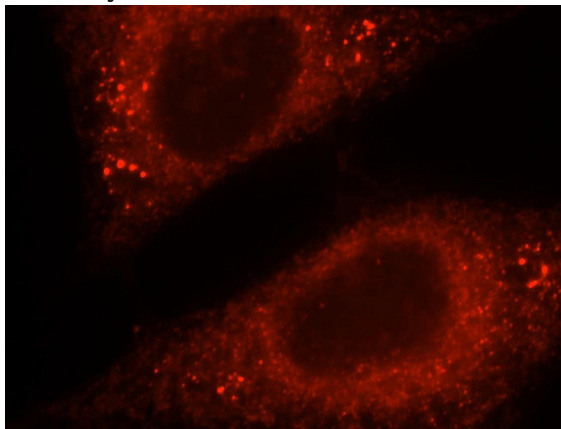


Pyruvate Carboxylase antibody



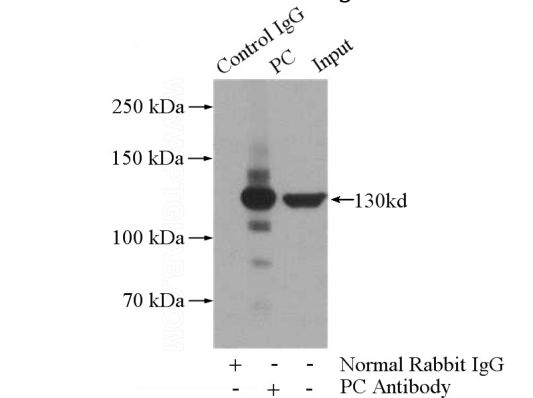
Catalog Number: 114365

Immunohistochemical of paraffin-embedded human liver using Catalog No:114365(PC antibody) at dilution of 1:50 (under 40x lens)



Immunofluorescent analysis of HepG2 cells, using

PC antibody Catalog No:114365 at 1:25 dilution and Rhodamine-labeled goat anti-rabbit IgG (red).



IP Result of anti-PC (IP:Catalog No:114365, 4ug; Detection:Catalog No:114365 1:600) with mouse liver tissue lysate 4000ug.