

PYGL antibody

Catalog Number: 114360

Product name

PYGL antibody

Specificity

Human, Mouse; other species not tested.

Antibody description

PYGL Rabbit Polyclonal antibody. Positive IF detected in HepG2 cells. Positive WB detected in HepG2 cells, HeLa cells. Positive IP detected in HepG2 cells. Observed molecular weight by Western-blot: 97-105 kDa

Preparation

This antibody was obtained by immunization of Peptide (Accession Number: NM_002863). Purification method: Antigen affinity purified.

Formulation

PBS with 0.02% sodium azide and 50% glycerol pH 7.3.

Storage

Store at -20°C. DO NOT ALIQUOT

Clonality

Polyclonal

Ig Type

Rabbit IgG

Applications

ELISA, WB, IF, IP

Dilutions

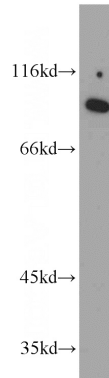
Recommended Dilution:

WB: 1:200-1:2000

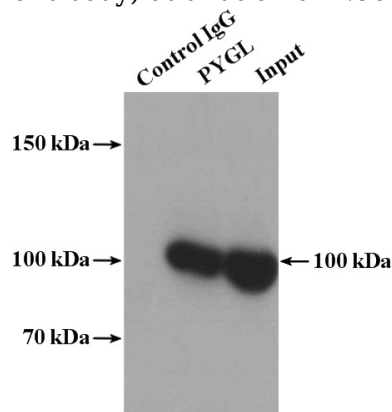
IP: 1:200-1:2000

IF: 1:20-1:200

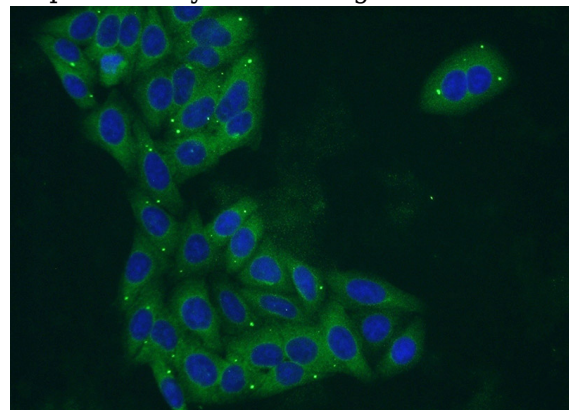
Validations



HepG2 cells were subjected to SDS PAGE followed by western blot with Catalog No:114360(PYGL antibody) at dilution of 1:500



IP Result of anti-PYGL (IP:Catalog No:114360, 4ug; Detection:Catalog No:114360 1:500) with HepG2 cells lysate 2400ug.



Immunofluorescent analysis of HepG2 cells using Catalog No:114360(PYGL Antibody) at dilution of 1:50 and Alexa Fluor 488-conjugated AffiniPure

PYGL antibody



Catalog Number: 114360

Goat Anti-Rabbit IgG(H+L)