

# PYGL antibody

Catalog Number: 114359

## Product name

PYGL antibody

## Specificity

Human, Mouse, Rat; other species not tested.

## Antibody description

PYGL Rabbit Polyclonal antibody. Positive IF detected in HeLa cells. Positive IHC detected in human kidney tissue, human brain tissue, human heart tissue, human liver tissue, human lung tissue, human ovary tissue, human placenta tissue, human skin tissue, human spleen tissue, human testis tissue. Positive WB detected in rat liver tissue, HeLa cells, HepG2 cells, human liver tissue, human spleen tissue, mouse skin tissue, rat heart tissue. Positive IP detected in mouse liver tissue. Observed molecular weight by Western blot: 97kd

## Preparation

This antibody was obtained by immunization of PYGL recombinant protein (Accession Number: NM\_002863). Purification method: Antigen affinity purified.

## Formulation

PBS with 0.02% sodium azide and 50% glycerol pH 7.3.

## Storage

Store at -20°C. DO NOT ALIQUOT

## Clonality

Polyclonal

## Ig Type

Rabbit IgG

## Applications

ELISA, IHC, WB, IP, IF

## Dilutions

Recommended Dilution:

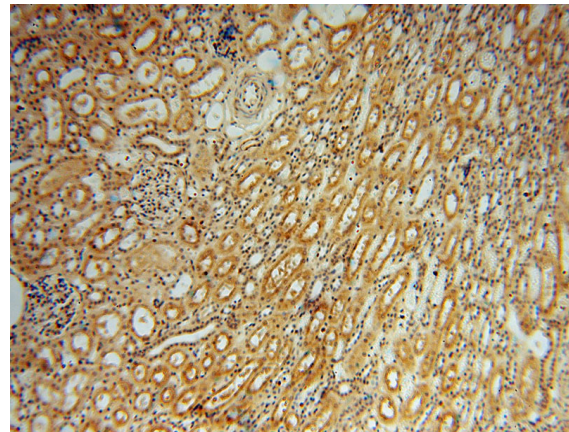
WB: 1:500-1:5000

IP: 1:500-1:5000

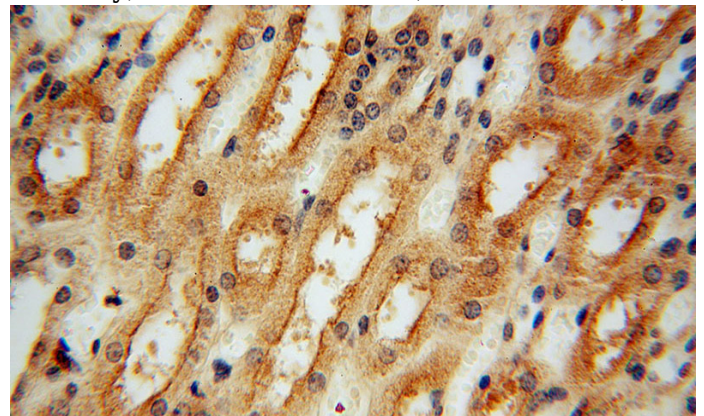
IHC: 1:20-1:200

IF: 1:20-1:200

## Validations



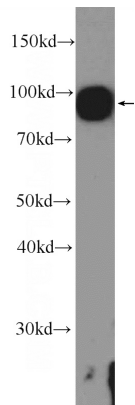
Immunohistochemical of paraffin-embedded human kidney using Catalog No:114359(PYGL antibody) at dilution of 1:100 (under 10x lens)



Immunohistochemical of paraffin-embedded human kidney using Catalog No:114359(PYGL antibody) at dilution of 1:100 (under 40x lens)

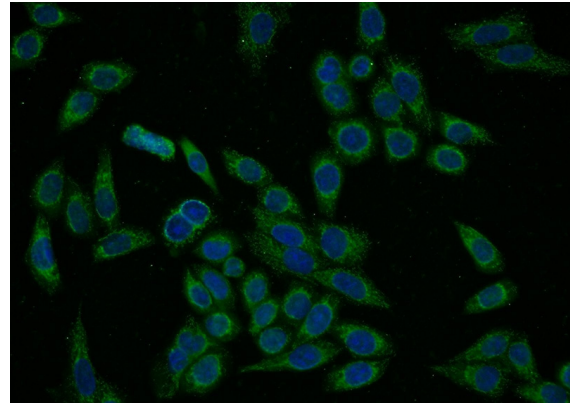
# PYGL antibody

Catalog Number: 114359



rat liver tissue were subjected to SDS PAGE followed by western blot with Catalog No:114359(PYGL Antibody) at dilution of 1:1000

IP Result of anti-PYGL (IP:Catalog No:114359, 4ug; Detection:Catalog No:114359 1:1000) with mouse liver tissue lysate 4000ug.



Immunofluorescent analysis of HeLa cells using Catalog No:114359(PYGL Antibody) at dilution of 1:50 and Alexa Fluor 488-conjugated AffiniPure Goat Anti-Rabbit IgG(H+L)

