

# PYCR1 antibody



Catalog Number: 114353

## Product name

PYCR1 antibody

## Specificity

Human, Mouse; other species not tested.

## Antibody description

PYCR1 Rabbit Polyclonal antibody. Positive WB detected in Raji cells, human brain tissue. Positive IP detected in Raji cells. Positive IHC detected in human colon cancer tissue. Observed molecular weight by Western-blot: 34 kDa

## Preparation

This antibody was obtained by immunization of Peptide (Accession Number: NM\_006907). Purification method: Antigen affinity purified.

## Formulation

PBS with 0.02% sodium azide and 50% glycerol pH 7.3.

## Storage

Store at -20°C. DO NOT ALIQUOT

## Clonality

Polyclonal

## Ig Type

Rabbit IgG

## Applications

ELISA, WB, IHC, IP

## Dilutions

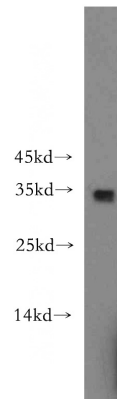
Recommended Dilution:

WB: 1:500-1:5000

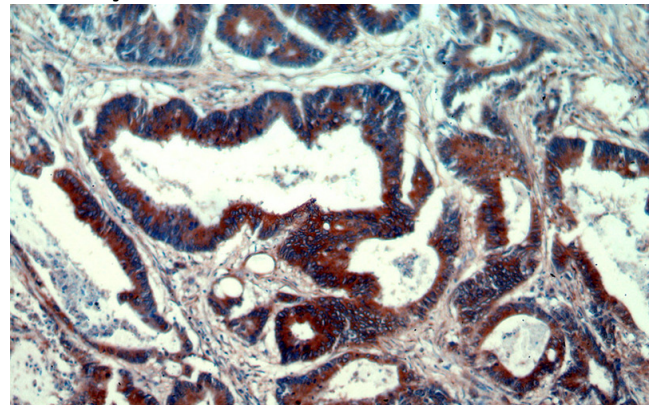
IP: 1:200-1:2000

IHC: 1:20-1:200

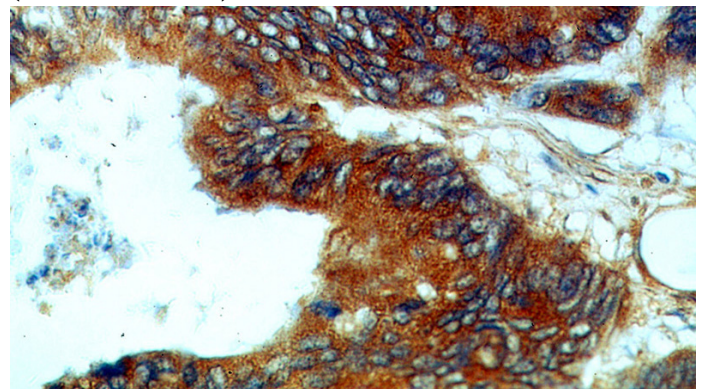
## Validations



Raji cells were subjected to SDS PAGE followed by western blot with Catalog No:114353(PYCR1 antibody) at dilution of 1:500



Immunohistochemical of paraffin-embedded human colon cancer using Catalog No:114353(PYCR1 antibody) at dilution of 1:50 (under 10x lens)

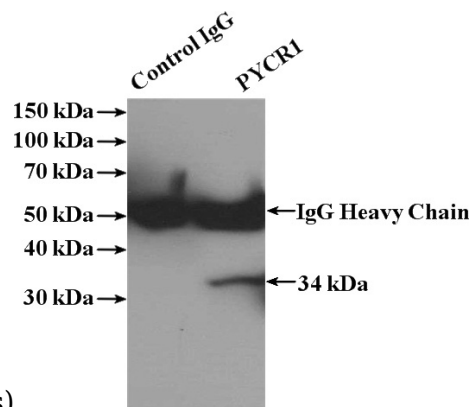


Immunohistochemical of paraffin-embedded human colon cancer using Catalog No:114353(PYCR1 antibody) at dilution of 1:50

# PYCR1 antibody

Catalog Number: 114353

---



IP Result of anti-PYCR1 (IP:Catalog No:114353, 4ug; Detection:Catalog No:114353 1:500) with Raji cells lysate 1440ug.

(under 40x lens)