

PUMA antibody

Catalog Number: 114338

Product name

PUMA antibody

Specificity

Human, Mouse, Rat; other species not tested.

Antibody description

PUMA Rabbit Polyclonal antibody. Positive WB detected in A549 cells, HepG2 cells. Positive IP detected in mouse heart tissue. Positive IHC detected in human testis tissue. Observed molecular weight by Western-blot: 18-21 kDa

Preparation

This antibody was obtained by immunization of Peptide (Accession Number: NM_014417). Purification method: Antigen affinity purified.

Formulation

0.1M NaHCO₃, 0.1M glycine, 0.02% sodium azide and 50% glycerol pH 7.3.

Storage

Store at -20°C. DO NOT ALIQUOT

Clonality

Polyclonal

Ig Type

Rabbit IgG

Applications

ELISA, WB, IP, IHC

Dilutions

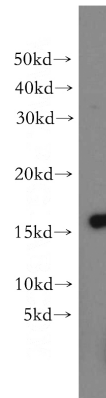
Recommended Dilution:

WB: 1:500-1:5000

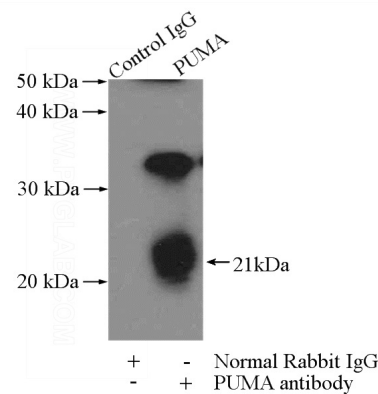
IP: 1:200-1:2000

IHC: 1:20-1:200

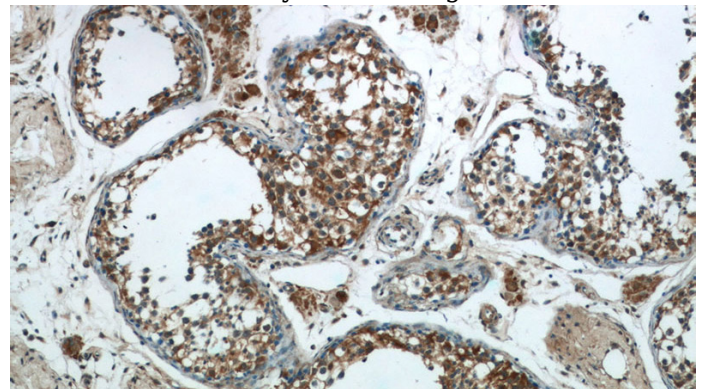
Validations



A549 cells were subjected to SDS PAGE followed by western blot with Catalog No:114338(PUMA antibody) at dilution of 1:500



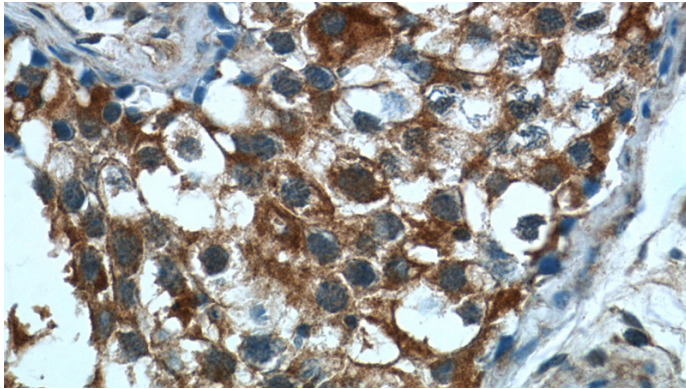
IP Result of anti-PUMA (IP:Catalog No:114338, 4ug; Detection:Catalog No:114338 1:500) with mouse heart tissue lysate 3200ug.



Immunohistochemistry of paraffin-embedded human testis tissue slide using Catalog No:114338(PUMA Antibody) at dilution of 1:200 (under 10x lens)

PUMA antibody

Catalog Number: 114338



Immunohistochemistry of paraffin-embedded human testis tissue slide using Catalog No:114338(PUMA Antibody) at dilution of 1:200 (under 40x lens)