

# PTRH2 antibody

Catalog Number: 114333

## Product name

PTRH2 antibody

IHC: 1:10-1:100

IF: 1:20-1:200

## Specificity

Human, Mouse, Rat; other species not tested.

## Antibody description

PTRH2 Rabbit Polyclonal antibody. Positive IF detected in HEK-293 cells. Positive IHC detected in human prostate cancer tissue. Positive WB detected in HEK-293 cells. Observed molecular weight by Western-blot: 20 kDa

## Preparation

This antibody was obtained by immunization of PTRH2 recombinant protein (Accession Number: XM\_011524887). Purification method: Antigen affinity purified.

## Formulation

PBS with 0.1% sodium azide and 50% glycerol pH 7.3.

## Storage

Store at -20°C. DO NOT ALIQUOT

## Clonality

Polyclonal

## Ig Type

Rabbit IgG

## Applications

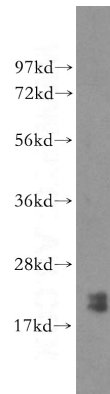
ELISA, WB, IHC, IF

## Dilutions

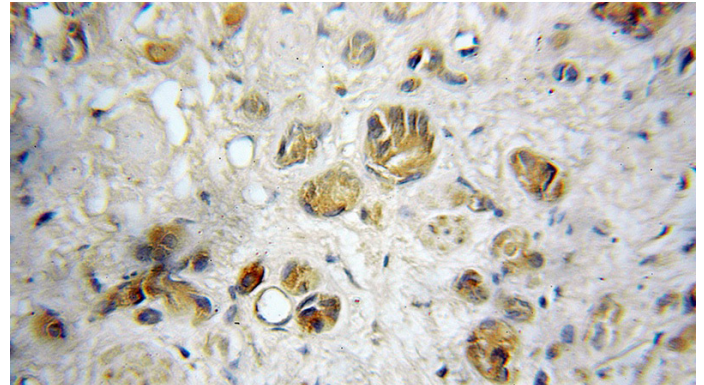
Recommended Dilution:

WB: 1:500-1:5000

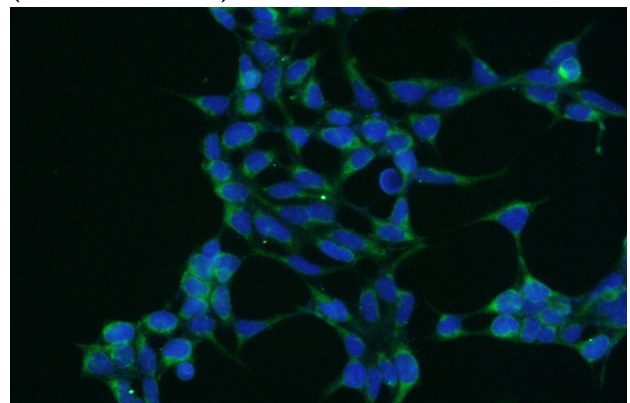
## Validations



HEK-293 cells were subjected to SDS PAGE followed by western blot with Catalog No:114333(PTRH2 antibody) at dilution of 1:1000



Immunohistochemical of paraffin-embedded human prostate cancer using Catalog No:114333(PTRH2 antibody) at dilution of 1:10 (under 25x lens)



Immunofluorescent analysis of HEK-293 cells

# PTRH2 antibody



Catalog Number: 114333

---

using Catalog No:114333(PTRH2 Antibody) at

dilution of 1:50 and Alexa Fluor 488-conjugated  
AffiniPure Goat Anti-Rabbit IgG(H+L)