

# PTPRA antibody

Catalog Number: 114325

## Product name

PTPRA antibody

IP: 1:200-1:1000

IHC: 1:20-1:200

## Specificity

Human, Mouse, Rat; other species not tested.

## Antibody description

PTPRA Rabbit Polyclonal antibody. Positive IHC detected in human lymphoma tissue. Positive IP detected in A431 cells. Positive WB detected in A431 cells, HEK-293 cells, human liver tissue. Observed molecular weight by Western-blot: 140 kDa

## Preparation

This antibody was obtained by immunization of PTPRA recombinant protein (Accession Number: NM\_080841). Purification method: Antigen affinity purified.

## Formulation

PBS with 0.1% sodium azide and 50% glycerol pH 7.3.

## Storage

Store at -20°C. DO NOT ALIQUOT

## Clonality

Polyclonal

## Ig Type

Rabbit IgG

## Applications

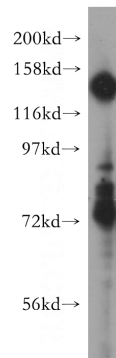
ELISA, WB, IHC, IP

## Dilutions

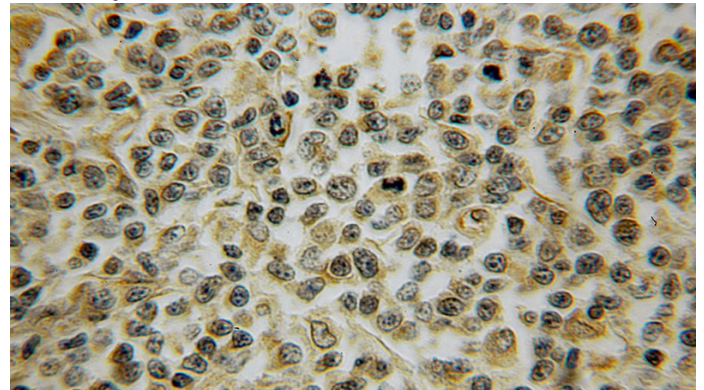
Recommended Dilution:

WB: 1:1000-1:10000

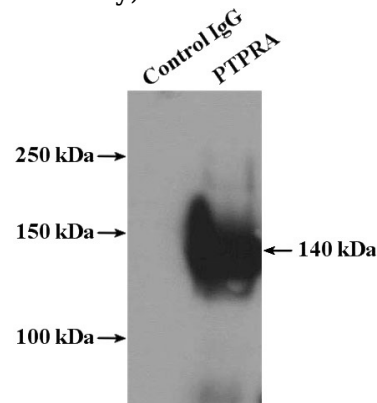
## Validations



A431 cells were subjected to SDS PAGE followed by western blot with Catalog No:114325(LRP antibody) at dilution of 1:600



Immunohistochemical of paraffin-embedded human lymphoma using Catalog No:114325(LRP antibody) at dilution of 1:100 (under 10x lens)



IP Result of anti-LRP (IP:Catalog No:114325, 4ug; Detection:Catalog No:114325 1:300) with A431

# PTPRA antibody



Catalog Number: 114325

---

cells lysate 2400ug.