

# PTP1B antibody



Catalog Number: 114310

## Product name

PTP1B antibody

Recommended Dilution:

WB: 1:500-1:5000

## Specificity

Human, Mouse, Rat; other species not tested.

IP: 1:200-1:2000

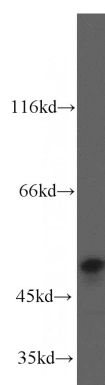
IHC: 1:20-1:200

## Antibody description

PTP1B Rabbit Polyclonal antibody. Positive WB detected in Jurkat cells, A431 cells, BxPC-3 cells, HL-60 cells, human placenta tissue, human testis tissue, PC-3 cells. Positive IP detected in A431 cells. Positive IF detected in BxPC-3 cells. Positive IHC detected in human prostate cancer tissue. Observed molecular weight by Western-blot: 45-55 kDa

IF: 1:10-1:100

## Validations



## Preparation

This antibody was obtained by immunization of PTP1B recombinant protein (Accession Number: NM\_002827). Purification method: Antigen affinity purified.

Jurkat cells were subjected to SDS PAGE followed by western blot with Catalog No:114310(PTPN1 antibody) at dilution of 1:300

## Formulation

PBS with 0.02% sodium azide and 50% glycerol pH 7.3.

## Storage

Store at -20°C. DO NOT ALIQUOT

## Clonality

Polyclonal

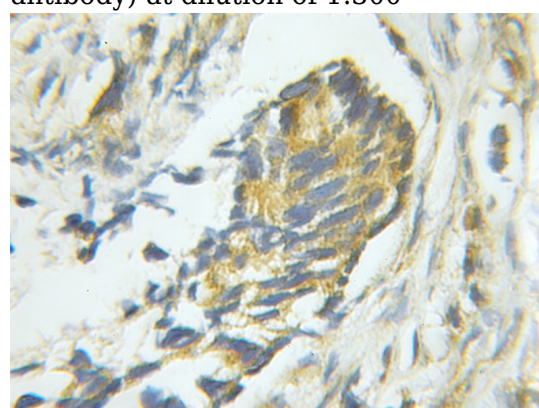
## Ig Type

Rabbit IgG

## Applications

ELISA, WB, IHC, IF, IP

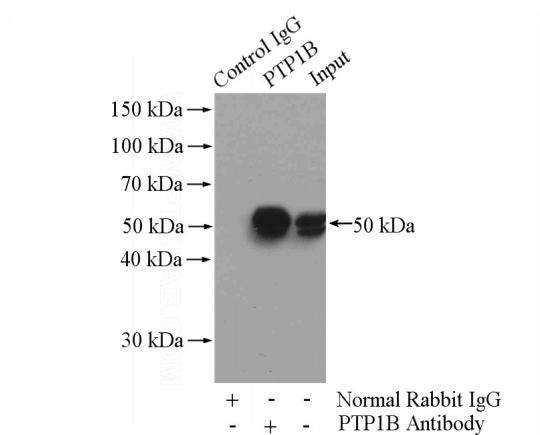
## Dilutions



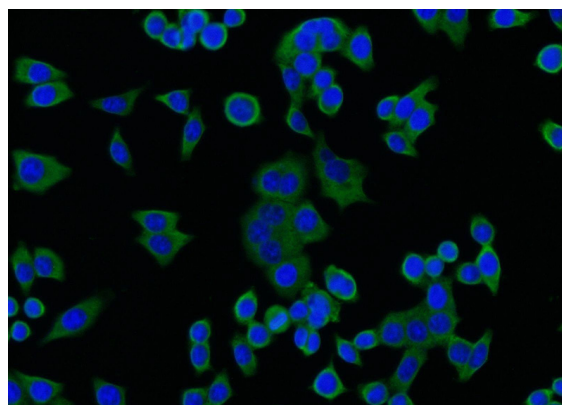
Immunohistochemical of paraffin-embedded human prostate cancer using Catalog No:114310(PTPN1 antibody) at dilution of 1:50 (under 10x lens)

# PTP1B antibody

Catalog Number: 114310



IP Result of anti-PTPN1 (IP:Catalog No:114310, 4ug; Detection:Catalog No:114310 1:500) with A431 cells lysate 2400ug.



Immunofluorescent analysis of BxPC-3 cells using Catalog No:114310(PTPN1 Antibody) at dilution of 1:25 and Alexa Fluor 488-conjugated AffiniPure Goat Anti-Rabbit IgG(H+L)