

# PSG1 antibody

Catalog Number: 114302

## Product name

PSG1 antibody

IHC: 1:20-1:200

IF: 1:10-1:100

## Specificity

Human; other species not tested.

## Antibody description

PSG1 Rabbit Polyclonal antibody. Positive IF detected in MCF-7 cells. Positive IHC detected in human placenta tissue. Positive WB detected in human kidney tissue, MCF7 cells. Observed molecular weight by Western-blot: 72kd,36kd

## Preparation

This antibody was obtained by immunization of PSG1 recombinant protein (Accession Number: NM\_006905). Purification method: Antigen affinity purified.

## Formulation

PBS with 0.1% sodium azide and 50% glycerol pH 7.3.

## Storage

Store at -20°C. DO NOT ALIQUOT

## Clonality

Polyclonal

## Ig Type

Rabbit IgG

## Applications

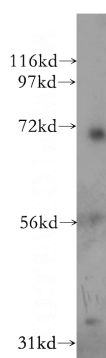
ELISA, WB, IHC, IF

## Dilutions

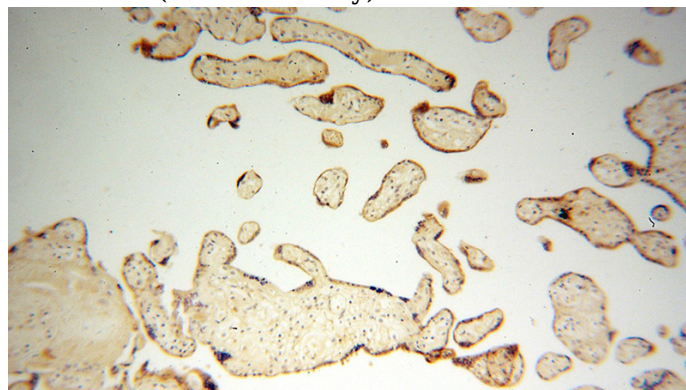
Recommended Dilution:

WB: 1:500-1:5000

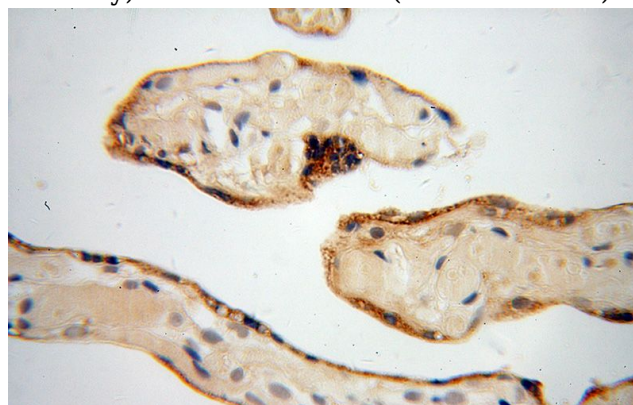
## Validations



human kidney tissue were subjected to SDS PAGE followed by western blot with Catalog No:114302(PSG1 antibody) at dilution of 1:500



Immunohistochemical of paraffin-embedded human placenta using Catalog No:114302(PSG1 antibody) at dilution of 1:50 (under 10x lens)



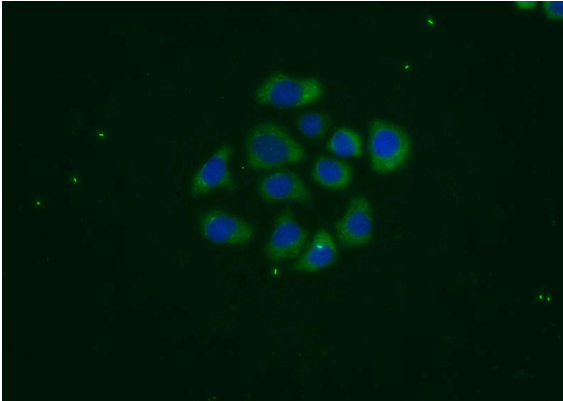
Immunohistochemical of paraffin-embedded human placenta using Catalog No:114302(PSG1

# PSG1 antibody

Catalog Number: 114302

---

antibody) at dilution of 1:50 (under 40x lens)



Immunofluorescent analysis of MCF-7 cells using Catalog No:114302(PSG1 Antibody) at dilution of 1:25 and Alexa Fluor 488-conjugated AffiniPure Goat Anti-Rabbit IgG(H+L)