

PSAT1 antibody



Catalog Number: 114293

Product name

PSAT1 antibody

IHC: 1:20-1:200

IF: 1:10-1:100

Specificity

human, mouse, rat; other species not tested.

Antibody description

PSAT1 Rabbit Polyclonal antibody. Positive WB detected in HEK-293 cells, HeLa cells, HepG2 cells. Positive IF detected in HepG2. Positive IHC detected in human kidney. Observed molecular weight by Western-blot: 40-45kd

Preparation

This antibody was obtained by immunization of PSAT1 recombinant protein (Accession Number: BC001618). Purification method: Antigen affinity purified.

Formulation

PBS with 0.02% sodium azide and 50% glycerol pH 7.3.

Storage

Store at -20°C. DO NOT ALIQUOT

Clonality

Polyclonal

Ig Type

Rabbit IgG

Applications

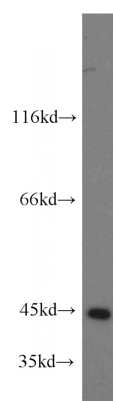
ELISA, WB, IHC, IF

Dilutions

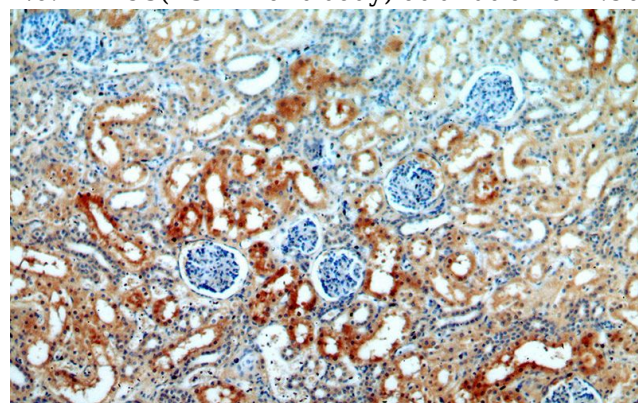
Recommended Dilution:

WB: 1:500-1:5000

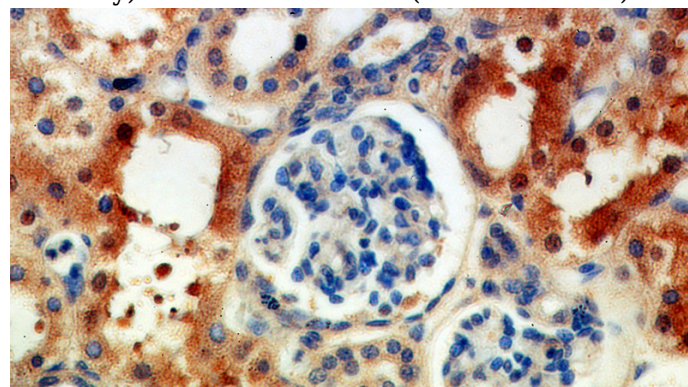
Validations



HEK-293 cells were subjected to SDS PAGE followed by western blot with Catalog No:114293(PSAT1 antibody) at dilution of 1:500



Immunohistochemical of paraffin-embedded human kidney using Catalog No:114293(PSAT1 antibody) at dilution of 1:100 (under 10x lens)



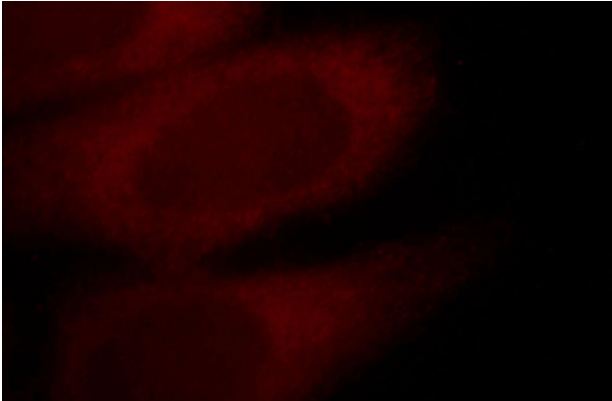
Immunohistochemical of paraffin-embedded human kidney using Catalog No:114293(PSAT1

PSAT1 antibody



Catalog Number: 114293

antibody) at dilution of 1:100 (under 40x lens)



Immunofluorescent analysis of HepG2 cells, using PSAT1 antibody Catalog No:114293 at 1:25 dilution and Rhodamine-labeled goat anti-rabbit IgG (red).